

# FOREWORD

The labour force statistics are pivotal for manpower planning, human resource development and economic growth. Federal Bureau of Statistics has been conducting Labour Force Surveys (LFS) since 1963. The Survey's figures are extensively used by the government, researchers and other users at large.

LFS has been conducted on quarterly representative sample since 2005-06. For this purpose, the survey's total sample size is evenly distributed into four quarterly representative sub-samples, each to be enumerated in a given quarter. It is the report on fourth quarter (April-June 2011) of the LFS 2010-11.

The report presents area/gender wise national/area level estimates on the main labour force indicators of employment and unemployment according to industry and occupation. The report is previewed with an account of the concepts & definitions and methodology, to help understand the configuration of estimates.

Effort is made to produce this report an informative and useful document for decision-makers, researchers, planners, economists and other beneficiaries at large. Suggestions will, however, be welcome for its further improvement.

**ARIF MEHMOOD CHEEMA**  
Director General

Federal Bureau of Statistics  
Statistics Division  
Government of Pakistan  
**Islamabad**  
July, 2011

## M A I N I N D I C A T O R S

Indicators	4 <sup>th</sup> Quarter (April-June)		Indicators	4 <sup>th</sup> Quarter (April-June)	
	LFS 2009-10	LFS 2010-11		LFS 2009-10	LFS 2010-11
Labour Force Participation Rates (%)			Unemployment Rates (%)		
Pakistan			Pakistan		
Total	32.4	32.2	Total	5.6	5.7
Male	49.2	48.7	Male	4.4	5.0
Female	14.5	15.0	Female	9.9	8.3
Rural			Rural		
Total	33.6	33.4	Total	5.0	4.9
Male	48.7	48.0	Male	4.0	4.4
Female	17.9	18.3	Female	7.8	6.2
Urban			Urban		
Total	29.9	29.8	Total	7.1	7.7
Male	50.2	49.9	Male	5.3	6.0
Female	7.7	8.4	Female	19.7	18.0
Activity Status (%)			Literacy Rates (%)		
Formal			Pakistan		
Total	26.8	26.2	Total	58.6	59.0
Rural	22.7	24.6	Male	70.8	70.9
Urban	30.9	27.8	Female	45.6	46.8
Informal			Rural		
Total	73.2	73.8	Total	50.6	51.3
Rural	77.3	75.4	Male	65.3	65.7
Urban	69.1	72.2	Female	35.3	36.7
Employment by Sector (%)			Urban		
Total	100.0	100.0	Total	72.8	73.5
Agriculture	42.4	45.4	Male	80.4	80.6
Industry	21.5	20.1	Female	64.4	66.1
Services	36.1	34.5			
Employment Status (%)					
Total	100.0	100.0			
Employers	0.9	1.5			
Own account workers	35.0	35.0			
Contributing family workers	27.2	27.5			
Employees	36.9	36.0			

## SUMMARY OF FINDINGS

The changes in the quarterly (April-June) figures of LFS 2009-10 vis-à-vis the same period of 2010-11, are given as below in the parenthesis in the order of 2009-10 and 2010-11.

- i) **Participation rate** seem decreasing (32.4%, 32.2%). Participation rate in rural (33.6%, 33.4%) & urban (29.9%, 29.8%) areas and for males (49.2%, 48.7%) follow suit while trend up in the case of females (14.5%, 15.0%).
- ii) **Activity status** indicates increase in the informal sector (73.2%, 73.8%) while decrease in the formal (26.8%, 26.2%). However, females shares indicate a sort of opposite changes decrease in the former (74.3%, 69.6%) while increase in the latter (25.7%, 30.4%).
- iii) **Employment Status** shows that *employees* lose steam (36.9%, 36%), *own account worker* level same (35%) while *contributing family workers* scale up (27.2%, 27.5%).
- iv) **Employment by major industry divisions** shows increase in agriculture & *allied activities* (42.4%, 45.4%) while all remaining activities seem to be on decline.
- v) **Mean Hours Worked** lose steam (48.2, 47.2) during the period. The comparative males (51.5, 50.8) & females shares (35.4, 34.3) make similar configuration.
- vi) **Unemployment rate** increases (5.6%, 5.7%). Male unemployment rate follows suit (4.4% , 5.0%) while that of females decrease (9.9%, 8.3%). Increase is indicated in urban (7.1%, 7.7%) while a sort of equivalence is observed in the rural areas (5.0%, 4.9%).

## SECTION -I

### METHODOLOGY

#### ***Introduction***

Labour Force Survey (LFS) has, more or less, been a regular activity of the Federal Bureau of Statistics (FBS) since 1963. As an ongoing process to keep abreast with emerging standards, the survey's questionnaire was revised in 1990. Major improvements constitute the addition of probing questions on marginal economic activities that tend to go unrecorded with conventional questions and, are carried out by women presumably. The questionnaire was further improved in 1995 to reckon with the size and composition of migration and informal sectors. The scope of the survey was extended in 2001-02 to occupational safety and health as well. The questionnaire was further articulated to conduct the 1<sup>st</sup> ever quarterly representative LFS 2005-06.

2. The current LFS 2010-11-30<sup>th</sup> one in the series-is the sixth one being carried out on quarterly basis. For this purpose, the total sample size is evenly distributed into four distinct sub-samples, each to be enumerated in a given quarter. The quarterly sample is designed to chalk up national level estimates with rural-urban breakup.

#### ***Objectives and Coverage***

3. The main aim of conducting LFS on quarterly basis is to provide lead assessment of a set of pivotal indicators of employment and literacy. It is pertinent to mention that quarterly estimates don't add up to annual estimates due to inter quarterly variation.

4. The survey covers all urban and rural areas of the four provinces of Pakistan defined as such by 1998 Population Census, excluding Federally Administered Tribal Areas (FATA) and military restricted areas.

#### ***Field Operation***

5. FBS is the national statistical organization responsible for collection, processing, compilation and dissemination of statistics. It has 34 Regional/Field Offices located all over Pakistan. These offices are equipped and manned with regular and trained field staff for collection of data through censuses/surveys.

6. In order to evolve dynamics of field enumeration in line with the survey's objectives, training is imparted to the concerned staff on interviewing techniques and other procedure to be used in the enumeration. For quality control, supervisors from Regional/Field Offices and headquarter, make frequent field visits to spot-checking the collection process.

#### ***Data Processing and Editing***

7. Soon after data collection, the supervisors clean, edit and check the filled in questionnaires manually for consistency and completeness and refer back to field where necessary.

8. Editing is done at headquarter by the subject matter section. Computer edit checks are applied to get even with errors identified at the stage of data entry. The relevant numerical techniques are used to eliminate erroneous data resulting from mistakes made during coding. The survey records are further edited and rectified through a series of computer processing stages.

9. ***Sampling Frame:*** Federal Bureau of Statistics (FBS) has developed its own sampling frame for urban areas. Each city/town is divided into a number of enumeration blocks. Each enumeration block is based on 200 to 250 households on the average with well-defined boundaries and maps. The list of enumeration blocks as updated through Economic Census 2003 and the list of villages/mouzas/dehs of 1998 Population Census have been taken as sampling frame. Enumeration blocks and villages are considered as Primary Sampling Units (PSUs) from urban and rural domains respectively.

### ***Stratification Plan***

10. ***Urban Domain:*** Karachi, Lahore, Gujranwala, Faisalabad, Rawalpindi, Multan, Sialkot, Sargodha, Bahawalpur, Hyderabad, Sukkur, Peshawar, Quetta and Islamabad are considered as large cities. Each of these cities constitutes a separate stratum, further sub-stratified according to low, middle and high income groups based on the information collected in respect of each enumeration block at the time of demarcation/ updating of urban area sampling frame.

11. ***Remaining Urban Areas:*** After excluding the population of large cities from the population of respective ex-administrative division, the remaining urban population of ex-administrative division from provinces is grouped together to form another stratum called other urban. Thus each ex-division in remaining urban areas in the four provinces constitutes a stratum.

12. ***Rural Domain:*** Each administrative district in the Punjab, Sindh and Khyber/Pk is considered an independent stratum whereas in Balochistan, each ex-administrative division constitutes a stratum.

13. ***Universe:*** The universe for LFS consists of all urban and rural areas of the four provinces of Pakistan defined as such by 1998 Population Census.

### ***Sample Design***

14. ***Procedure:*** A stratified two-stage sample design is adopted for the survey.

15. ***Selection of primary sampling units (PSUs):*** Enumeration blocks in urban domain and mouzas/dehs/villages in rural are taken as Primary Sampling Units (PSUs). In the urban domain, sample PSUs from each ultimate stratum/sub-stratum have been selected with probability proportional to size (PPS) method of sampling scheme. In urban domain, the number of households in an enumeration block as updated through Economic Census and in rural domain, the population of 1998 Census in a village is considered as measure of size.

16. ***Selection of secondary sampling units (SSUs):*** The constituent households of sample PSUs are taken as Secondary Sampling Units (SSUs). A specified number of households i.e. 12 from each urban sample PSU, 16 from rural sample PSU have been selected with equal probability using systematic sampling technique with a random start.

17. ***Sample Size and Its Allocation:*** Methodologically, a sample of 9116 households is considered appropriate to provide reliable estimates of key labour force characteristics. The entire sample of households (SSUs) is drawn from 645 Primary Sampling Units (PSUs) out of which 301 are urban and 344 are rural. As urban population is more heterogeneous therefore, a higher proportion of sample size is allocated to urban domain. As a means to get reliable estimates, a higher proportion of sample is assigned to Khyber/Pk and Balochistan in consideration to their

smallness. After fixing the sample size at provincial level, further distribution of sample PSUs to different strata in rural and urban domains in each province is made proportionately. The distribution of sample PSUs and SSUs in the urban and rural domain of the four provinces is as under : -

#### SAMPLE SIZE AND ITS ALLOCATION

(Nos.)

Province/Area	Enumeration Blocks/Villages (PSUs)			Sample Households (SSUs)		
	Rural	Urban	Total	Rural	Urban	Total
Punjab	153	131	284	2448	1572	4020
Sindh	81	86	167	1296	1032	2328
Khyber/Pk	64	44	108	1024	528	1552
Balochistan	46	40	86	736	480	1216
<b>Pakistan</b>	<b>344</b>	<b>301</b>	<b>645</b>	<b>5504</b>	<b>3612</b>	<b>9116</b>

#### *Reliability of Estimate*

18. Notwithstanding complete observance of the requisite codes to ensure reliability of data, coefficient of variations, computed in the backdrop of 5% margin of error exercised for determining sample size, are also given below to affirm the reliability of estimates.

#### COEFFICIENT OF VARIATION (CVs) OF IMPORTANT VARIABLES

Characteristics	Coefficient of Variation (Cvs) in Percentage
Total Persons	1.02
Employed Persons	1.93
Employed Persons by Formal Sector	4.14
Employed Persons by Informal Sector	2.51
Literacy Rate	1.68
Household Size	0.73
Sex Ratio	0.83

#### *Method of Data Collection*

19. Data are collected by direct interview method. Generally, the head of household is chosen to provide information about all members of the household. In case of his non-availability at the time of interview, some other informed member of the household down the line is interviewed. The total sample for the year is evenly distributed for enumeration on quarterly basis to offset the effect of seasonal variations. The information collected however relates to the week preceding the date of enumeration.

#### *Coverage*

20. The survey covers all urban and rural areas of the four provinces of Pakistan defined as such by 1998 Population Census, excluding Federally Administered Tribal Areas (FATA) and military restricted areas. The population of excluded areas constitutes about 2% of the total population.

21. All enumeration Blocks in urban areas and mouzas/dehs/villages in rural areas have been enumerated. The number of sample households 9065 (99.4% of the total sample) enumerated is less than the estimated sample size 9116 due to non-contact and refusal cases in urban and rural areas.

## SECTION -II

### CONCEPTS AND DEFINITIONS

A brief explanation of the key concepts and definitions follows.

1. **Reference Period** is a week preceding the date of interview
2. **Literate** is a ten plus aged person who declares he could read and write in any language with understanding.
3. **Literacy rate** relates to the number of literate persons expressed as a percentage of the population ten years and above.
4. **Household** constitutes all those persons who usually live together and share their meals. A household may consist of one person or more who may or may not be related to each other.
5. **Migration** means movement of people from one administrative district to another administrative district at any time of their lives. It excludes movement of population within the current district.
6. **Economically Active Population** comprises all persons of either sex who provide labour services for the production of goods and services as defined by the United Nation System of National Accounts, during a specific reference period. According to this definition, the production of goods and services includes:
  - i) all production and processing of primary products whether for the market, barter or, own consumption,
  - ii) the production of all other goods and services for the market,
  - iii) the households which produce such goods and services for the market and own consumption, and
  - iv) own account construction
7. **Currently Active Population** or the labour force comprises all ten plus aged persons who fulfill the requirements for including among employed or unemployed during the reference period.
8. **Crude activity rate** is the currently active population expressed as a percentage of the total population in Pakistan.
9. **Refined activity rate** is the currently active population expressed as a percentage of the ten plus aged population. This rate enables international comparison by factoring in the effect of age composition.

10. **Employment** comprises all ten plus aged persons who worked at least one hour during the reference period and were either paid *employed* or *self employed*. Persons employed on permanent/regular footings, who have not worked for any reason during the reference period are also treated as employed, regardless of the duration of the absence or whether workers continued to receive a salary during the absence. The survey obtains information on the duration of absence as well as on other formal job attachment characteristics of workers in paid and self employment. In line with augmented participation rates, a loose upper bound of employment can be drawn up by including the persons engaged in marginal economic activities.

11. **Occupation** means the type of work done during the reference period by the persons employed (or the kind of work done previously if unemployed), irrespective of the industry or the status in employment of the person. It provides description of a person's job. Occupation is classified according to the Pakistan Standard Classification of Occupations based on the International Standard Classification of Occupations, ISCO-88.

12. **Industry** means the activity of the firm, office, establishment or department in which a person is employed or the kind of business, which he/she operates. The activity is defined in terms of the kind of goods produced or services supplied by the unit in which the person works. Industry is classified according to a national classification of industries used for national accounts and developed in 2007 on the basis of the International Standard Industrial Classification, ISIC, rev. 3.

13. **Self-employment job** is a job where remuneration is directly dependent upon the profits, or the potential profits, derived from the goods and services produced.

14. **Status in Employment** refers to the type of explicit or implicit contract of employment of the person with other persons or organizations. Status of an economically active individual with respect to his employment i.e. whether he/she is an employer, own account worker, employee or contributing family worker is defined as follows:

15. **Employee** is a person who works for a public or private employer and receives remuneration in wages, salary, commission, tips, piece rates or pay in kind. Employees are divided into

- *Regular paid employees with fixed wage*
- *Casual paid employee*
- *Paid worker by piece rate or work performed*
- *Paid non-family apprentice*

16. **Employer** is a person working during the reference period, on own-account or with one or a few partners at a "self-employment job" with one or more employees engaged on a continuous basis.

17. **Own account worker** is a person working during the reference period, on own-account or with one or more partners at a "self-employment job", without any employee engaged on a continuous basis; but, possibly, with one or more contributing family workers or employees engaged on an occasional basis. It includes owner cultivator, share cropper and contract cultivator.

18. **Contributing family worker** is a person who works without pay in cash or in kind on an enterprise operated by a member of his/her household or other related persons is termed as contributing family worker.

19. *Unemployment* comprises all ten plus aged persons who during the reference period were:
- i) **“Without work”** i.e. were not in paid-employment or self-employment; and
  - ii) **“Currently available for work”** i.e. were available for paid employment or self-employment; or
  - iii) **“Not currently available”** for the following reasons: illness, will take a job within a month, is temporarily laid off, is an apprentice and is not willing to work; or
  - iv) **“Seeking work”** i.e. had taken specific steps in a reference period to seek paid employment or self employment.
20. *Unemployment rate* is the unemployed population expressed as a percentage of the currently active population.

## SECTION - III

### Salient Features

The fourth quarterly estimates are based on the data of 9065 sample households enumerated through April-June 2011. Findings are presented in the form of proportions and percentages to provide for all-purpose employability. For absolute numbers, one may refer to the population of Pakistan as per Planning & Development Division projection, estimated at 175.75 million on 16<sup>th</sup> May, 2011. A brief account of the survey's fourth quarter's estimates in comparison with that of the same period of LFS 2009-10 follows.

#### *Labour Force Participation Rates*

2. Labour force participation rates seem to be enervating. Participation Rates by area and, for males, follow suit while trend up in the case of females. The pertinent information is contained in the table-5 below.

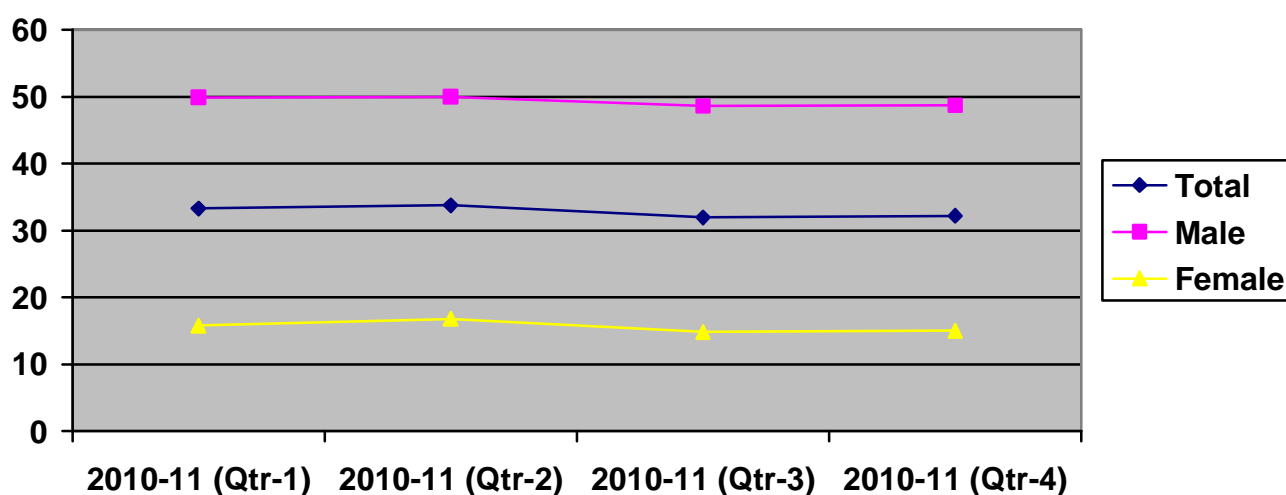
TABLE-1

CRUDE ACTIVITY (PARTICIPATION) RATES-PAKISTAN AND ITS RURAL-URBAN

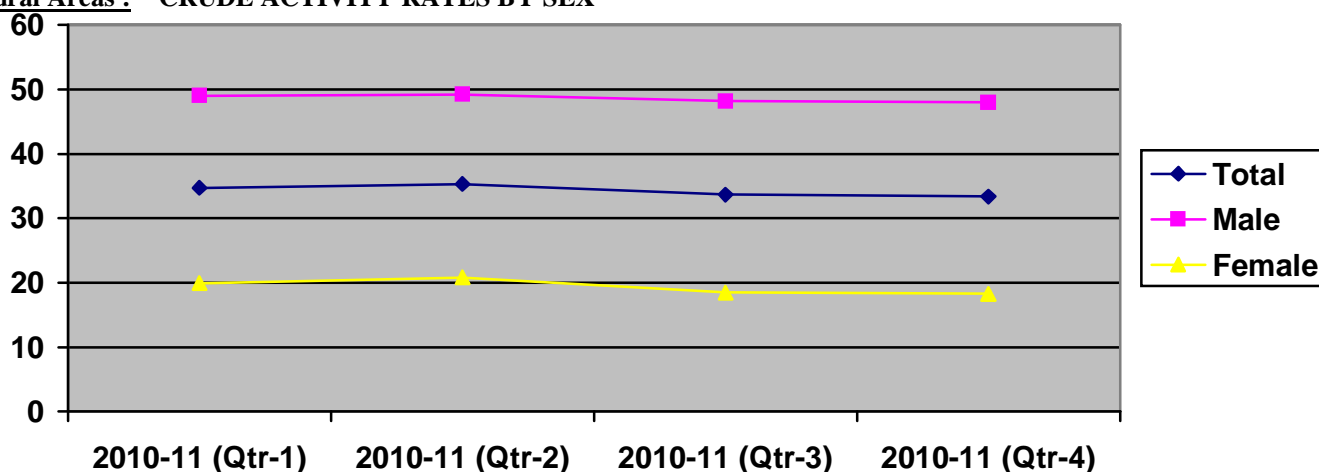
Area	4 <sup>th</sup> Quarter					
	LFS 2009-10			LFS 2010-11		
	Total	Male	Female	Total	Male	Female
Total	32.4	49.2	14.5	32.2	48.7	15.0
Rural	33.6	48.7	17.9	33.4	48.0	18.3
Urban	29.9	50.2	7.7	29.8	49.9	8.4

Figure 1 :CRUDE ACTIVITY RATES BY SEX FOR PAKISTAN, RURAL & URBAN

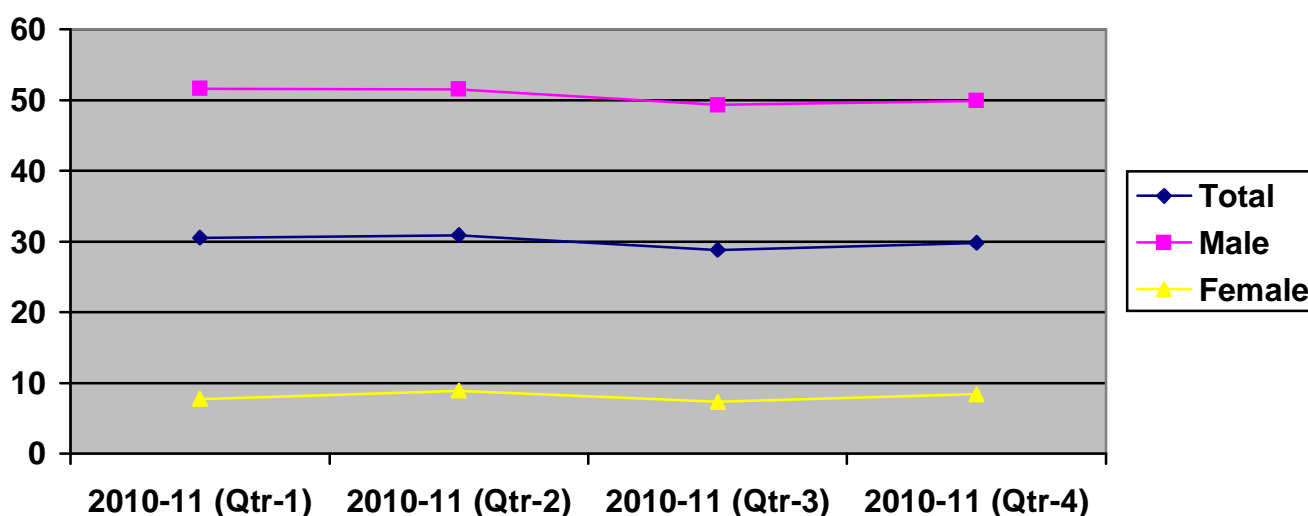
All Areas :



**Rural Areas : CRUDE ACTIVITY RATES BY SEX**



**Urban Areas: CRUDE ACTIVITY RATES BY SEX**



**Activity Status**

3. Informal sector waxes while formal wanes marginally. However, female share indicate a sort of opposite changes, decrease in the former while increase in the latter. Urban areas indicate similar scenario while opposite obtains in rural areas.

**TABLE-2**  
**FORMAL/INFORMAL SECTOR BY AREA AND SEX**

(%)

Area	4 <sup>th</sup> Quarter					
	LFS 2009-10			LFS 2010-11		
	Total	Male	Female	Total	Male	Female
<b>Total</b>	<b>100.0</b>	<b>100.0</b>	<b>100.0</b>	<b>100.0</b>	<b>100.0</b>	<b>100.0</b>
Formal	26.8	26.9	25.7	26.2	25.7	30.4
Informal	73.2	73.1	74.3	73.8	74.3	69.6
<b>Rural</b>	<b>100.0</b>	<b>100.0</b>	<b>100.0</b>	<b>100.0</b>	<b>100.0</b>	<b>100.0</b>
Formal	22.7	22.9	21.0	24.6	24.6	24.5
Informal	77.3	77.1	79.0	75.4	75.4	75.5
<b>Urban</b>	<b>100.0</b>	<b>100.0</b>	<b>100.0</b>	<b>100.0</b>	<b>100.0</b>	<b>100.0</b>
Formal	30.9	30.9	31.4	27.8	27.7	36.3
Informal	69.1	69.1	68.6	72.2	72.3	73.7

## Employed: Employment Status

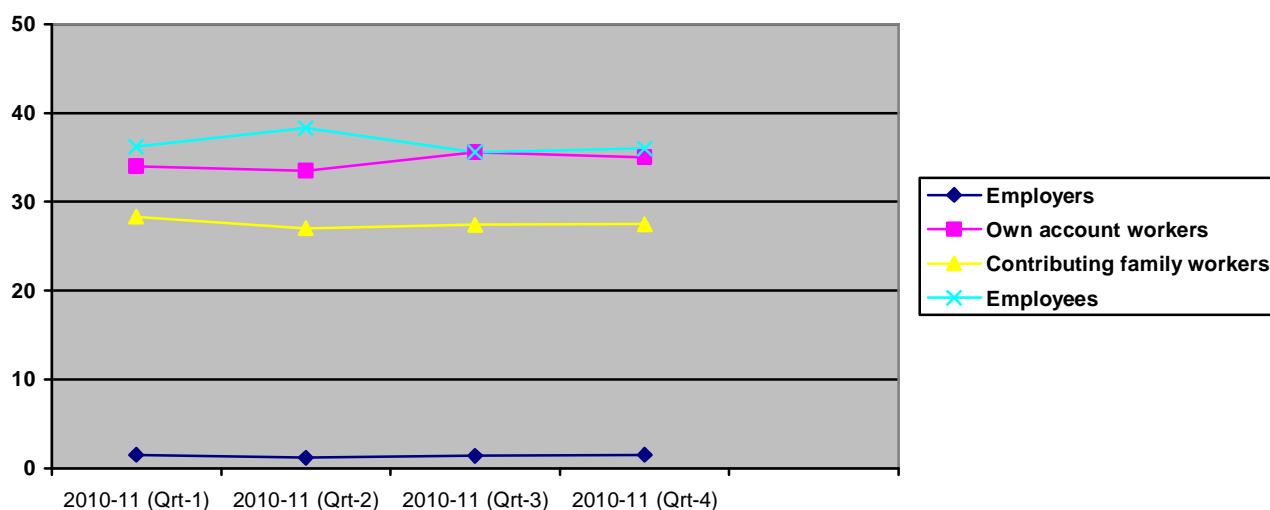
4. Employed persons are distributed in the order of *employees* (36%), *own account workers* (35%), *contributing family workers* (27.5%) and *employers* (1.5%). More females are engaged as *contributing family workers* (64.4%) while, more males are *own account workers*, *employees* and *employers* comparatively. As for change during the comparative period, *employees* lose steam *own account workers* level same while *contributing family workers* scale down.

**TABLE-3**  
**EMPLOYMENT STATUS-DISTRIBUTION OF EMPLOYED BY SEX**

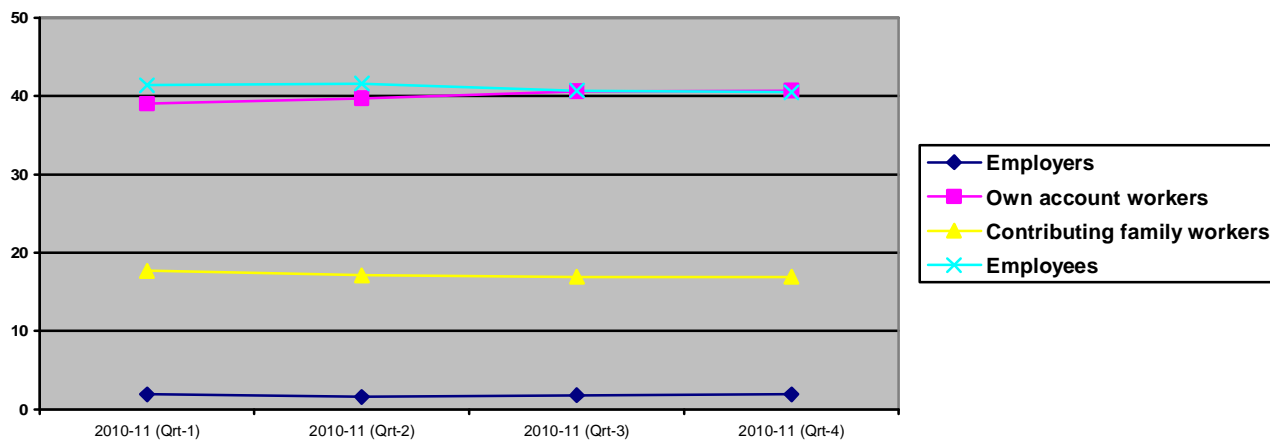
(%)

Employment Status	4 <sup>th</sup> Quarter					
	LFS 2009-10			LFS 2010-11		
	Total	Male	Female	Total	Male	Female
Employers	0.9	1.2	0.1	1.5	1.9	0.2
Own account workers	35.0	40.3	14.8	35.0	40.7	15.2
Contributing family workers	27.2	17.6	63.8	27.5	16.9	64.4
Employees	36.9	40.9	21.3	36.0	40.5	20.2
<b>Total</b>	<b>100.0</b>	<b>100.0</b>	<b>100.0</b>	<b>100.0</b>	<b>100.0</b>	<b>100.0</b>

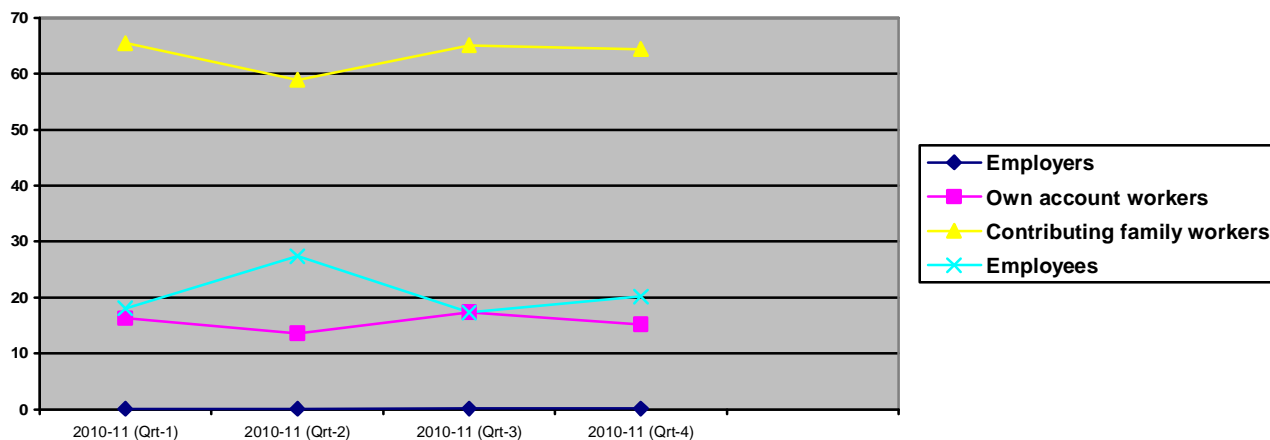
**Figure 2 : EMPLOYMENT STATUS : (Both Sexes)**



### EMPLOYMENT STATUS : (Male)



### EMPLOYMENT STATUS : (Female)



### *Employed: Major Industry Divisions*

5. All activities seem to be one wane except *agriculture & allied activities*. Generally, disaggregated indicators follow the movement of over all figures. Table-4 below provides the comparative figures.

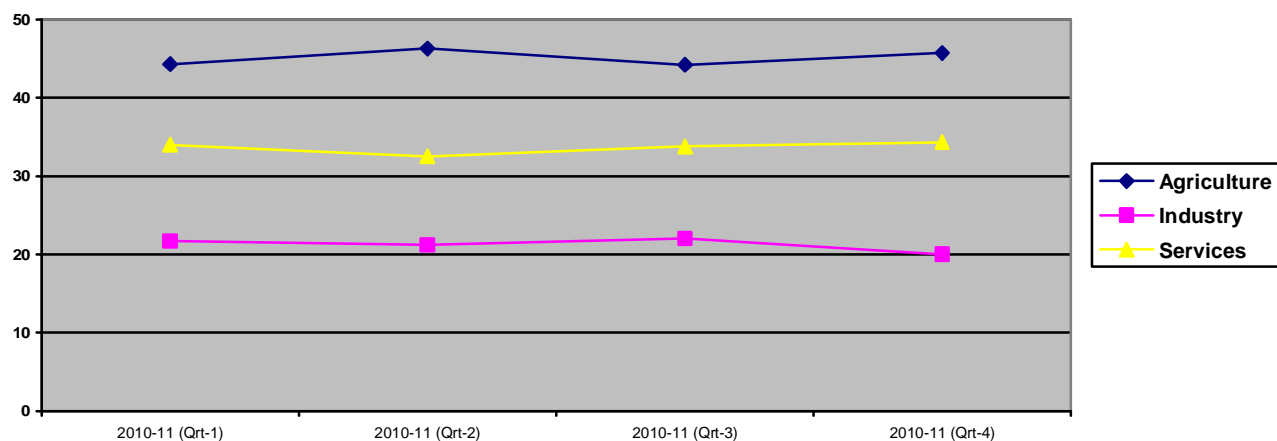
**TABLE-4**  
**MAJOR INDUSTRY DIVISIONS-DISTRIBUTION OF EMPLOYED**

(%)

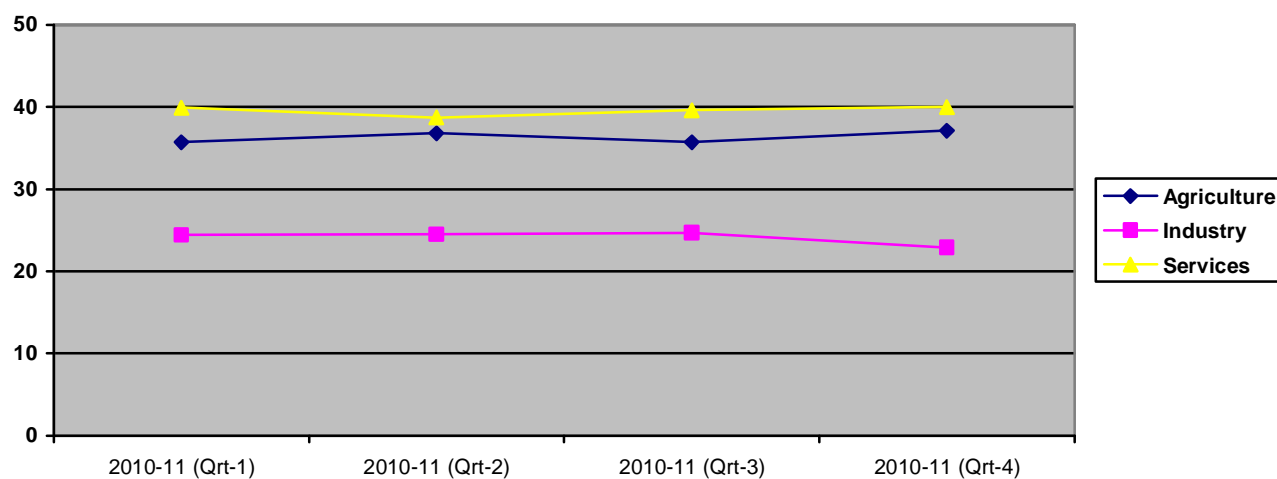
Major Industry Divisions	4 <sup>th</sup> Quarter					
	LFS 2009-10			LFS 2010-11		
	Total	Male	Female	Total	Male	Female
Agriculture/ forestry/hunting & fishing	42.4	35.0	70.9	45.4	36.9	75.5
Manufacturing	13.0	13.0	13.3	13.1	14.1	9.8
Construction	7.4	9.3	0.1	6.4	8.2	0.1
Wholesale & retail trade	17.1	20.9	2.4	16.4	20.6	1.5
Transport/storage & communication	5.5	6.9	0.4	4.9	6.3	0.1
Other community/social & personal service activities	12.1	11.8	12.7	11.7	11.3	12.8
*Others	2.5	3.1	0.2	2.1	2.6	0.2
<b>Total</b>	<b>100.0</b>	<b>100.0</b>	<b>100.0</b>	<b>100.0</b>	<b>100.0</b>	<b>100.0</b>

\* Others (includes mining & quarrying, electricity, gas & water, financing, real estate activities and extraterritorial organization and bodies)

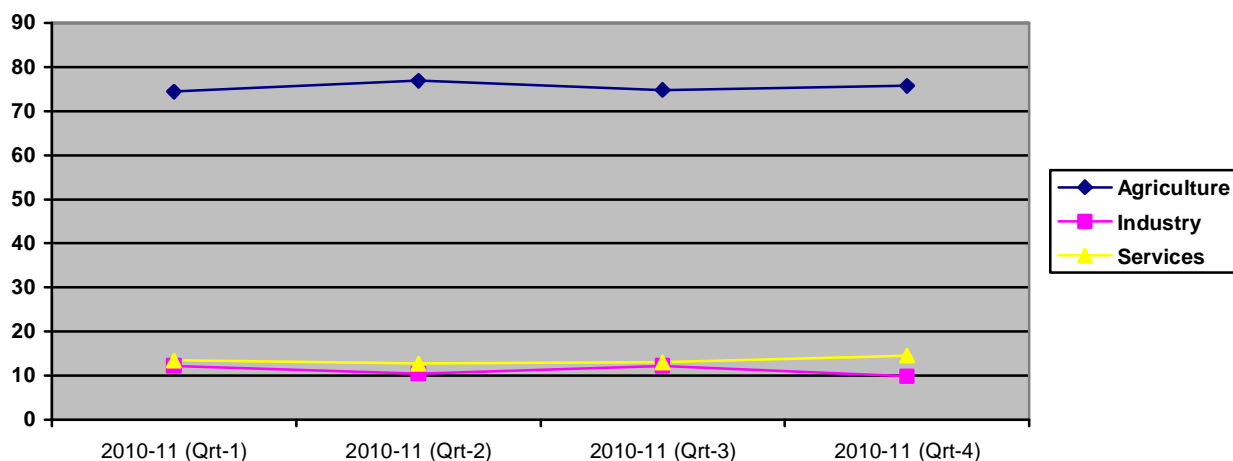
**Figure 3 : EMPLOYMENT BY SECTOR : PAKISTAN**



**EMPLOYMENT BY SECTOR : PAKISTAN (Male)**



### EMPLOYMENT BY SECTOR : PAKISTAN (Female)



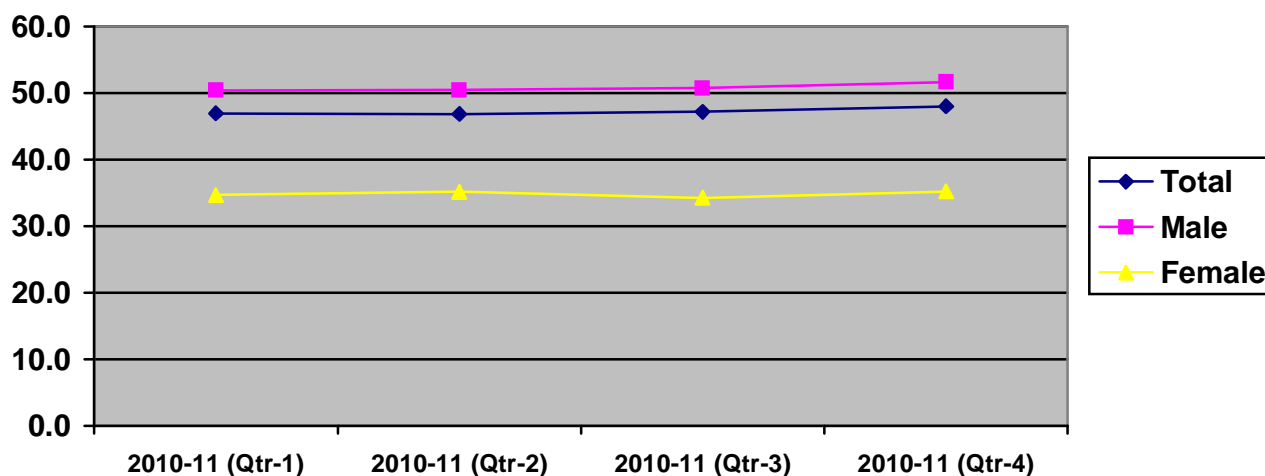
### Mean Hours Worked:

6. Mean hour worked seem to be losing steam during the period. The comparative males, females shares make similar configuration. The profile of rural areas are in sync with toto while figures in urban areas level up. The relevant information is tabled as below.

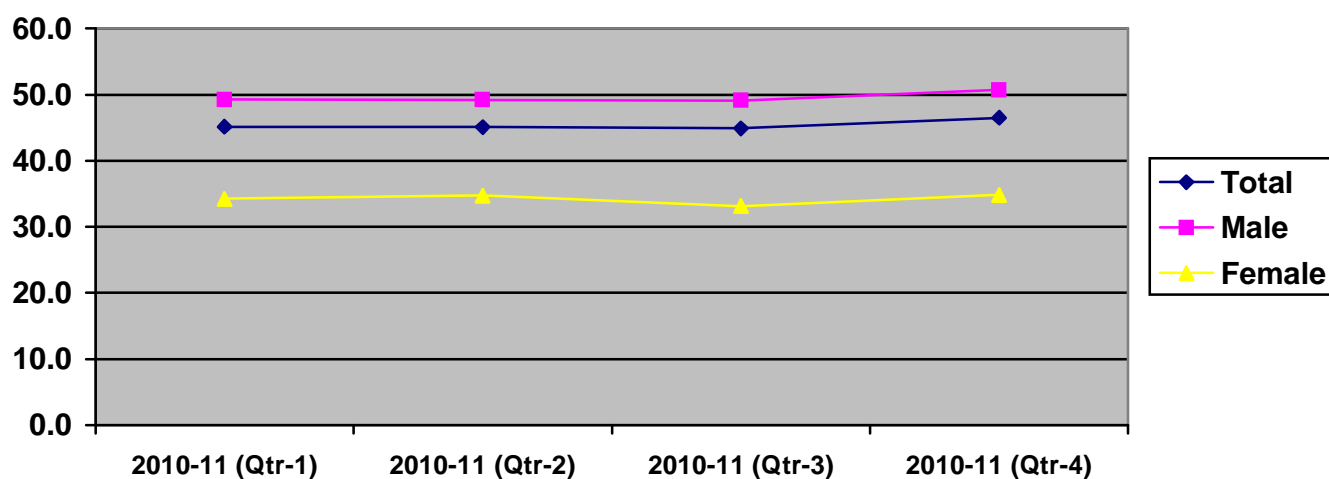
**Table-5**  
**MEAN HOURS WORKED - BY AREA AND SEX**

Area	4 <sup>th</sup> Quarter					
	LFS 2009-10			LFS 2010-11		
	Total	Male	Female	Total	Male	Female
Pakistan	48.2	51.5	35.4	47.2	50.8	34.3
Rural	46.5	50.5	34.6	44.9	49.1	33.1
Urban	51.9	53.4	39.2	52.4	53.9	40.3

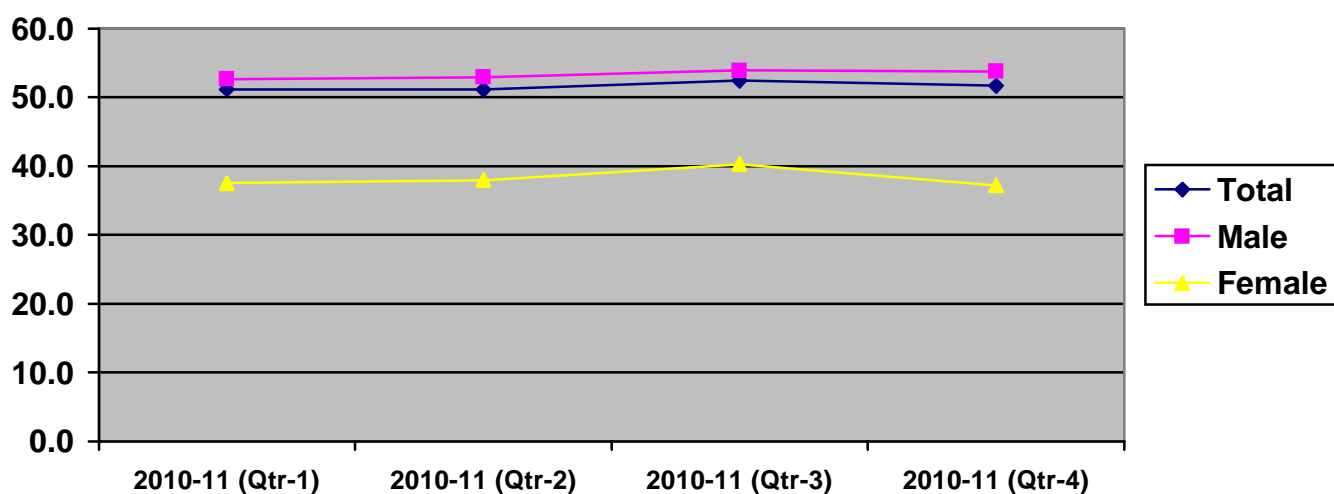
**Figure 4 : MEAN HOURS WORKED – PAKISTAN :**  
**All Areas :**



**Rural Area : MEAN HOURS WORKED**



**Urban Areas : MEAN HOURS WORKED**



***Unemployment Rates: Overall***

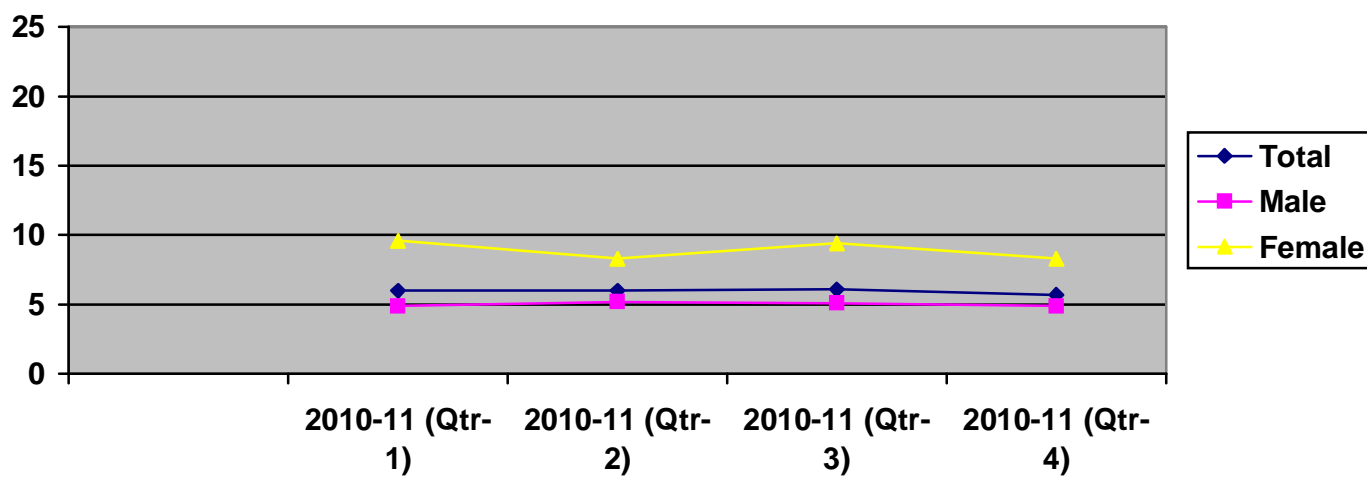
11. Unemployment rate (5.7%) waxes a sort during the comparative periods. Rates of males follow suit while that of females seem decreasing. Increase is indicated in urban, while a sort of equivalence is observed in rural areas. The relevant figures are presented in table-6.

**Table-6**  
**UNEMPLOYMENT RATES - BY AREA AND SEX**

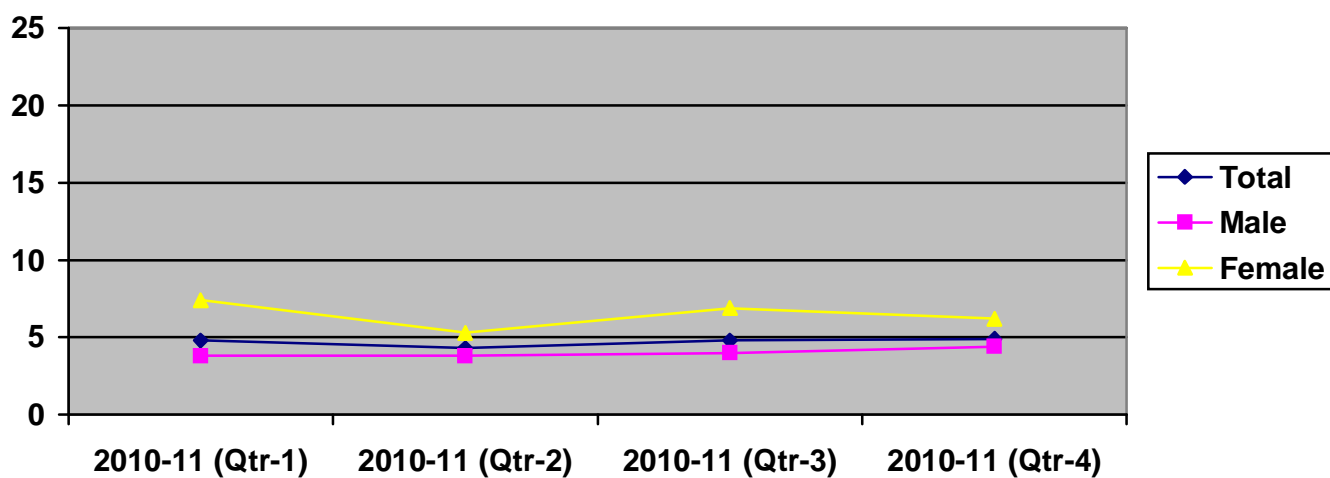
Area	4 <sup>th</sup> Quarter					
	LFS 2009-10			LFS 2010-11		
	Total	Male	Female	Total	Male	Female
Pakistan	5.6	4.4	9.9	5.7	5.0	8.3
Rural	5.0	4.0	7.8	4.9	4.4	6.2
Urban	7.1	5.3	19.5	7.7	6.0	18.0

**Figure 5 : UNEMPLOYMENT RATES BY SEX FOR PAKISTAN, RURAL & URBAN**

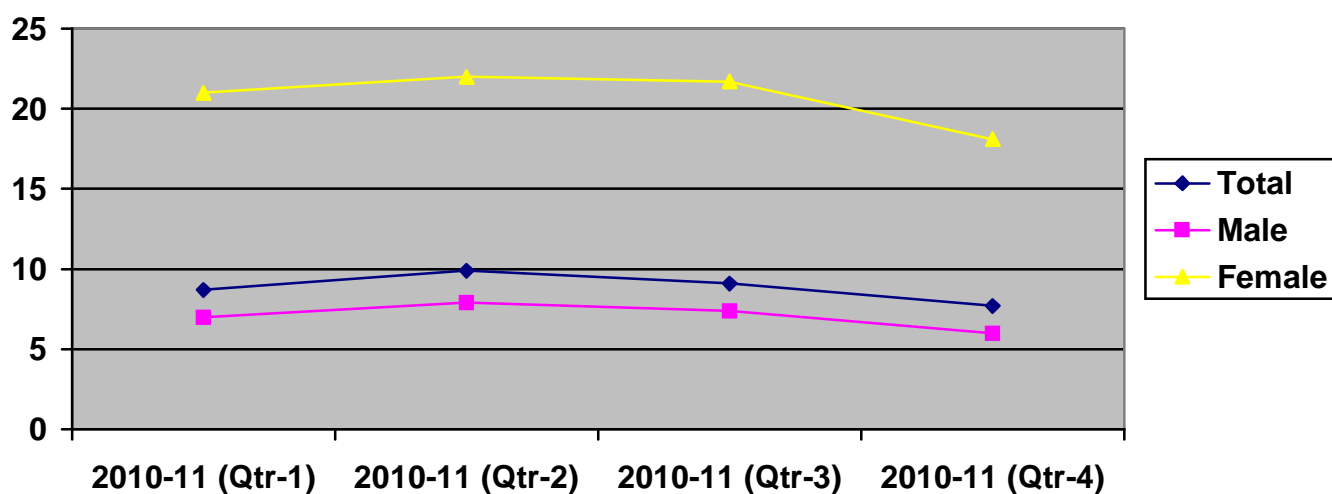
**All Areas :**



**Rural Area :**



**Urban Areas :**



# LIST OF PUBLISHED ANNUAL REPORTS OF LABOUR FORCE SURVEYS

S. No	Reports	Enumeration Period	Date of Publications
1.	1963-64	July, 1963 to June, 1964	10 <sup>th</sup> August, 1966
2.	1966-67	July, 1966 to June, 1967	December, 1971
3.	1967-68	July, 1967 to June, 1968	February, 1971
4.	1968-69	July, 1968 to June, 1969	15 <sup>th</sup> March, 1973
5.	1969-70	July, 1969 to June, 1970	28 <sup>th</sup> April, 1973
6.	1970-71	July, 1970 to June, 1971	11 <sup>th</sup> May, 1973
7.	1971-72	July, 1971 to June, 1972	9 <sup>th</sup> June, 1973
8.	1974-75	July, 1974 to June, 1975	June, 1976
9.	1978-79	July, 1978 to June, 1979	May, 1982
10.	1982-83	July, 1982 to June, 1983	May, 1984
11.	1984-85	July, 1984 to June, 1985	September, 1986
12.	1985-86	July, 1985 to June, 1986	March, 1987
13.	1986-87	July, 1986 to June, 1987	December, 1987
14.	1987-88	July, 1987 to June, 1988	February, 1989
15.	1990-91	July, 1990 to June, 1991	March, 1993
16.	1991-92	July, 1991 to June, 1992	February, 1994
17.	1992-93	July, 1992 to June, 1993	August, 1995
18.	1993-94	July, 1993 to June, 1994	December, 1995
19.	1994-95	July, 1994 to June, 1995	April, 1997
20.	1996-97	July, 1996 to June, 1997	October, 1998
21.	1997-98	July, 1997 to June, 1998	June, 2000
22.	1999-00	July, 1999 to June, 2000	July, 2001
23.	2001-02	July, 2001 to June, 2002	October, 2003
24.	2003-04	July 2003 to June 2004	October 2004
25.	2005-06	July 2005 to June 2006	October 2006
26.	2006-07	July 2006 to June 2007	July, 2008
27.	2007-08	July 2007 to June 2008	March, 2009
28.	2008-09	July 2008 to June 2009	April, 2010
29.	2009-10	July 2009 to June 2010	January, 2011

PERCENTAGE DISTRIBUTION OF POPULATION BY AGE, SEX AND AREA 2010-11

TABLE-1 PAKISTAN QUARTER: APR-JUN

AGE GROUP (YEARS)	POPULATION								
	ALL AREAS			RURAL			URBAN		
	TOTAL	MALE	FEMALE	TOTAL	MALE	FEMALE	TOTAL	MALE	FEMALE
	2	3	4	5	6	7	8	9	10
1									
TOTAL	100.00	51.08	48.92	66.87	34.02	32.85	33.13	17.05	16.08
LESS THAN 1 YEAR	2.06	1.08	.98	1.39	.70	.69	.67	.38	.29
1 YEAR BUT LESS THAN 2 YEARS	2.13	1.09	1.04	1.52	.79	.73	.61	.30	.31
2-4	9.17	4.83	4.34	6.47	3.38	3.08	2.71	1.45	1.26
5-9	15.00	7.83	7.17	10.73	5.63	5.10	4.27	2.20	2.07
10-14	13.28	6.99	6.29	9.27	4.94	4.32	4.01	2.04	1.97
15-19	11.14	5.74	5.40	7.40	3.82	3.58	3.74	1.93	1.82
20-24	8.74	4.27	4.47	5.38	2.63	2.75	3.37	1.65	1.72
25-29	6.98	3.22	3.75	4.37	1.94	2.43	2.60	1.28	1.32
30-34	6.04	2.75	3.29	3.78	1.69	2.09	2.26	1.06	1.20
35-39	5.61	2.79	2.82	3.62	1.75	1.87	1.99	1.04	.95
40-44	4.79	2.43	2.36	3.14	1.57	1.57	1.66	.87	.79
45-49	4.23	2.17	2.06	2.82	1.42	1.40	1.41	.75	.66
50-54	3.12	1.64	1.48	1.98	1.06	.92	1.14	.58	.56
55-59	2.53	1.36	1.17	1.57	.82	.75	.96	.54	.42
60-64	1.99	1.11	.88	1.29	.71	.58	.70	.40	.30
65 YEARS AND OVER	3.18	1.76	1.42	2.16	1.18	.98	1.02	.58	.44

PERCENTAGE DISTRIBUTION OF POPULATION BY AGE, SEX, LITERACY AND LEVEL OF EDUCATION 2010-11

TABLE-2PAKISTAN

QUARTER: APR-JUN

AGE GROUPS (YEARS)	LEVEL OF EDUCATION											
	TOTAL	ILLIT- ERATE	LITER- ATE	NO FORMAL EDUCA- TION	FORMAL EDUCA- TION	NURSE- RY BUT BELOW K.G.	K.G. BUT BELOW PRIM- ARY	PRIMA- RY BUT BELOW MIDDLE	MIDDLE BUT BLEOW MATRIC	MATRIC BUT BELOW INTER	INTER BUT BELOW DEGREE	DEGREE , POST GRAD- UATE & Ph.D.
1	2	3	4	5	6	7	8	9	10	11	12	13
BOTH SEXES												
TOTAL - ALL AGES	100.00	53.98	46.02	.32	45.71	.74	7.84	13.37	8.61	8.13	3.58	3.43
TOTAL-10 YEARS & OVER	100.00	41.02	58.98	.34	58.65	.07	6.76	18.67	12.02	11.35	5.00	4.79
TOTAL- 5 YEARS & OVER	100.00	46.87	53.13	.37	52.76	.86	9.05	15.43	9.94	9.38	4.14	3.96
05-09	17.31	12.96	4.35	.09	4.27	.80	3.47					
10-14	15.33	3.85	11.47	.02	11.46	.01	4.43	6.17	.85			
15-19	12.86	3.41	9.45	.02	9.43	.01	.25	2.42	3.75	2.44	.56	
20-24	10.09	3.05	7.04	.03	7.01		.26	1.39	1.25	1.80	1.41	.90
25-29	8.05	3.11	4.95	.03	4.92	.01	.13	1.16	1.04	1.15	.60	.83
30-34	6.97	3.03	3.95	.03	3.92	.01	.15	.98	.68	1.05	.47	.58
35-39	6.47	3.18	3.29	.02	3.27	.01	.08	.81	.68	.88	.34	.47
40-44	5.53	3.05	2.48	.03	2.45		.07	.75	.45	.55	.26	.38
45-49	4.88	2.93	1.95	.03	1.92	.01	.06	.61	.37	.43	.18	.28
50-54	3.60	2.15	1.45	.02	1.43		.05	.38	.37	.34	.12	.16
55-59	2.92	1.84	1.08	.02	1.06		.03	.30	.19	.30	.10	.15
60-64	2.30	1.57	.73	.02	.71		.02	.20	.13	.19	.06	.11
65 YEARS AND OVER	3.67	2.75	.92	.01	.91		.06	.25	.18	.25	.06	.11
M A L E												
TOTAL - ALL AGES	100.00	45.50	54.50	.32	54.18	.80	8.95	15.57	10.72	9.67	4.33	4.13
TOTAL-10 YEARS & OVER	100.00	29.07	70.93	.32	70.61	.10	7.89	21.95	15.12	13.63	6.11	5.82
TOTAL- 5 YEARS & OVER	100.00	36.83	63.17	.37	62.80	.93	10.37	18.05	12.43	11.21	5.02	4.78
05-09	17.77	12.93	4.84	.11	4.74	.85	3.89					
10-14	15.85	2.93	12.92	.01	12.91	.01	5.01	7.03	.86			
15-19	13.03	2.47	10.56	.03	10.53	.01	.30	2.78	4.38	2.50	.55	
20-24	9.70	1.86	7.84	.04	7.80		.29	1.61	1.55	1.98	1.60	.76
25-29	7.32	1.71	5.61	.01	5.60	.01	.14	1.25	1.40	1.31	.67	.81
30-34	6.24	1.67	4.57	.02	4.55	.02	.20	.99	.87	1.22	.60	.65
35-39	6.33	2.05	4.28	.01	4.27	.01	.10	.89	.94	1.20	.48	.65
40-44	5.52	2.17	3.35	.02	3.33		.09	.94	.65	.72	.36	.58
45-49	4.92	2.16	2.76	.04	2.73		.09	.83	.49	.63	.23	.45
50-54	3.72	1.68	2.04	.02	2.02		.08	.52	.53	.45	.18	.25
55-59	3.08	1.41	1.67	.02	1.65		.05	.47	.27	.46	.14	.26
60-64	2.52	1.37	1.15	.02	1.13		.03	.32	.20	.28	.10	.19
65 YEARS AND OVER	4.00	2.43	1.57	.02	1.54		.10	.42	.27	.45	.11	.19
F E M A L E												
TOTAL - ALL AGES	100.00	62.82	37.18	.32	36.86	.68	6.69	11.07	6.40	6.52	2.80	2.70
TOTAL-10 YEARS & OVER	100.00	53.24	46.76	.36	46.40	.04	5.60	15.30	8.84	9.01	3.87	3.74
TOTAL- 5 YEARS & OVER	100.00	57.27	42.73	.37	42.36	.78	7.69	12.73	7.36	7.49	3.22	3.11
05-09	16.84	12.99	3.85	.07	3.78	.75	3.03					
10-14	14.78	4.80	9.98	.03	9.95		3.83	5.27	.85			
15-19	12.69	4.38	8.30	.01	8.29		.20	2.05	3.10	2.39	.56	
20-24	10.50	4.29	6.21	.02	6.19		.22	1.16	.94	1.61	1.20	1.05
25-29	8.82	4.55	4.26	.04	4.22	.01	.12	1.06	.66	.98	.53	.85
30-34	7.73	4.43	3.30	.04	3.26	.01	.10	.97	.47	.88	.34	.50
35-39	6.62	4.35	2.27	.03	2.24	.01	.06	.73	.40	.55	.20	.30
40-44	5.55	3.96	1.59	.04	1.54		.04	.56	.25	.38	.15	.17
45-49	4.85	3.73	1.12	.03	1.09	.01	.04	.38	.24	.21	.12	.10
50-54	3.47	2.62	.85	.02	.83		.02	.24	.20	.22	.06	.07
55-59	2.75	2.29	.46	.01	.45		.01	.13	.10	.12	.05	.03
60-64	2.07	1.78	.29	.02	.27			.08	.05	.10	.02	.02
65 YEARS AND OVER	3.33	3.08	.25		.25		.01	.08	.09	.04		.02

PERCENTAGE DISTRIBUTION OF POPULATION BY AGE, SEX, LITERACY AND LEVEL OF EDUCATION 2010-11  
TABLE-2 (A) PAKISTAN RURAL QUARTER: APR-JUN

AGE GROUPS (YEARS)	LEVEL OF EDUCATION											
	TOTAL	ILLIT- ERATE	LITER- ATE	NO FORMAL EDUCA- TION	FORMAL EDUCA- TION	NURSE- RY BUT BELOW K.G.	K.G. BUT BELOW PRIM- ARY	PRIMA- RY BUT BELOW MIDDLE	MIDDLE BUT BELOW MATRIC	MATRIC BUT BELOW INTER	INTER BUT BELOW DEGREE	DEGREE , POST GRAD- UATE & Ph.D.
1	2	3	4	5	6	7	8	9	10	11	12	13
BOTH SEXES												
TOTAL - ALL AGES	100.00	60.25	39.75	.33	39.42	.82	7.89	13.58	7.50	5.85	2.24	1.53
TOTAL-10 YEARS & OVER	100.00	48.73	51.27	.34	50.92	.06	6.95	19.42	10.72	8.37	3.20	2.20
TOTAL- 5 YEARS & OVER	100.00	53.77	46.23	.38	45.85	.96	9.18	15.79	8.72	6.81	2.61	1.79
05-09	18.66	14.13	4.53	.10	4.43	.91	3.52					
10-14	16.12	4.74	11.38	.02	11.36	.01	4.46	6.17	.73			
15-19	12.87	4.15	8.73	.03	8.70	.01	.25	2.64	3.51	1.90	.38	
20-24	9.35	3.59	5.76	.03	5.72		.28	1.52	1.16	1.39	.89	.47
25-29	7.61	3.64	3.97	.03	3.94	.01	.17	1.20	.92	.88	.40	.37
30-34	6.57	3.52	3.05	.02	3.03	.01	.12	.99	.57	.76	.31	.27
35-39	6.30	3.80	2.50	.02	2.48	.01	.09	.82	.51	.57	.26	.23
40-44	5.45	3.54	1.91	.03	1.88		.06	.73	.41	.36	.15	.16
45-49	4.90	3.36	1.54	.04	1.50		.06	.63	.31	.27	.11	.12
50-54	3.45	2.43	1.02	.01	1.01		.06	.38	.28	.21	.04	.05
55-59	2.73	2.01	.72	.02	.70		.04	.29	.11	.19	.03	.03
60-64	2.24	1.79	.45	.02	.43		.02	.18	.07	.10	.02	.04
65 YEARS AND OVER	3.76	3.08	.68	.01	.67		.06	.23	.14	.17	.03	.04
M A L E												
TOTAL - ALL AGES	100.00	50.13	49.87	.34	49.53	.88	9.32	16.41	10.13	7.76	3.05	1.98
TOTAL-10 YEARS & OVER	100.00	34.29	65.71	.33	65.38	.09	8.37	23.75	14.66	11.22	4.42	2.87
TOTAL- 5 YEARS & OVER	100.00	41.79	58.21	.39	57.82	1.03	10.88	19.16	11.82	9.05	3.56	2.32
05-09	19.32	14.12	5.20	.12	5.08	.95	4.12					
10-14	16.96	3.58	13.38	.01	13.37	.02	5.21	7.30	.84			
15-19	13.10	2.79	10.31	.04	10.27	.02	.26	3.05	4.39	2.15	.40	
20-24	9.02	2.09	6.92	.04	6.88		.34	1.76	1.49	1.66	1.21	.42
25-29	6.67	1.88	4.79	.01	4.78	.01	.19	1.35	1.29	1.09	.46	.41
30-34	5.78	1.89	3.89	.01	3.88	.01	.16	1.10	.83	1.02	.45	.31
35-39	6.01	2.41	3.60	.02	3.58	.01	.13	.97	.81	.90	.39	.37
40-44	5.37	2.50	2.87	.01	2.86		.10	.97	.66	.58	.25	.30
45-49	4.86	2.54	2.32	.05	2.27		.07	.89	.46	.46	.16	.22
50-54	3.64	1.94	1.70	.02	1.68	.01	.11	.56	.48	.35	.08	.09
55-59	2.80	1.56	1.24	.02	1.22		.06	.48	.21	.35	.07	.06
60-64	2.43	1.67	.76	.03	.73		.03	.29	.14	.18	.03	.07
65 YEARS AND OVER	4.05	2.82	1.23	.02	1.22		.11	.43	.23	.32	.05	.07
F E M A L E												
TOTAL - ALL AGES	100.00	70.74	29.26	.32	28.94	.76	6.41	10.64	4.77	3.89	1.40	1.07
TOTAL-10 YEARS & OVER	100.00	63.34	36.66	.35	36.30	.03	5.52	15.03	6.74	5.49	1.98	1.51
TOTAL- 5 YEARS & OVER	100.00	66.09	33.91	.37	33.54	.88	7.43	12.33	5.53	4.50	1.62	1.24
05-09	17.98	14.14	3.84	.08	3.76	.86	2.91					
10-14	15.26	5.93	9.33	.03	9.30		3.68	5.01	.61			
15-19	12.64	5.54	7.10	.01	7.09		.24	2.23	2.60	1.65	.37	
20-24	9.69	5.14	4.56	.02	4.53		.23	1.27	.82	1.12	.56	.53
25-29	8.57	5.46	3.12	.05	3.07	.01	.14	1.05	.53	.66	.33	.34
30-34	7.38	5.20	2.18	.03	2.15		.08	.87	.31	.49	.16	.23
35-39	6.59	5.23	1.37	.01	1.35	.01	.06	.65	.20	.24	.11	.08
40-44	5.54	4.61	.93	.06	.87		.02	.49	.16	.13	.04	.03
45-49	4.94	4.21	.73	.02	.71	.01	.04	.36	.15	.08	.04	.02
50-54	3.25	2.92	.33		.32			.19	.07	.06		
55-59	2.65	2.46	.18	.02	.16		.01	.09	.02	.04		
60-64	2.04	1.91	.13	.02	.12			.08	.01	.02		.01
65 YEARS AND OVER	3.45	3.34	.11		.11		.02	.04	.04	.01		

PERCENTAGE DISTRIBUTION OF POPULATION BY AGE, SEX, LITERACY AND LEVEL OF EDUCATION2010-11

TABLE-2 (B)PAKISTAN URBAN

QUARTER: APR-JUN

AGE GROUPS (YEARS)	LEVEL OF EDUCATION											
	TOTAL	ILLIT- ERATE	LITER- ATE	NO FORMAL EDUCA- TION	FORMAL EDUCA- TION	NURSE- RY BUT BELOW K.G.	K.G. BUT BELOW PRIM- ARY	PRIMA- RY BUT BELOW MIDDLE	MIDDLE BUT BLEOW MATRIC	MATRIC BUT BELOW INTER	INTER BUT BELOW DEGREE	DEGREE , POST GRAD- UATE & Ph.D.
1	2	3	4	5	6	7	8	9	10	11	12	13
BOTH SEXES												
TOTAL - ALL AGES	100.00	41.31	58.69	.30	58.40	.58	7.75	12.96	10.85	12.71	6.29	7.26
TOTAL-10 YEARS & OVER	100.00	26.50	73.50	.33	73.17	.08	6.39	17.26	14.46	16.94	8.38	9.67
TOTAL- 5 YEARS & OVER	100.00	33.27	66.73	.34	66.39	.65	8.81	14.73	12.34	14.46	7.15	8.25
05-09	14.65	10.65	4.00	.06	3.95	.59	3.36					
10-14	13.76	2.11	11.65	.01	11.64		4.37	6.16	1.11			
15-19	12.85	1.96	10.89	.02	10.87	.01	.25	1.98	4.23	3.52	.89	
20-24	11.56	1.99	9.56	.02	9.54		.21	1.14	1.43	2.61	2.42	1.73
25-29	8.94	2.05	6.89	.02	6.87	.03	.07	1.08	1.28	1.68	.99	1.73
30-34	7.77	2.05	5.72	.04	5.68	.02	.20	.97	.88	1.63	.79	1.19
35-39	6.82	1.96	4.86	.04	4.83	.01	.06	.79	1.01	1.49	.51	.97
40-44	5.68	2.07	3.62	.02	3.60		.08	.79	.53	.93	.47	.80
45-49	4.86	2.07	2.78	.03	2.76	.01	.08	.57	.48	.72	.32	.58
50-54	3.90	1.59	2.31	.04	2.26		.04	.40	.55	.60	.28	.39
55-59	3.31	1.52	1.79	.02	1.77		.02	.33	.33	.50	.22	.38
60-64	2.41	1.14	1.26	.01	1.25		.02	.23	.24	.38	.14	.24
65 YEARS AND OVER	3.50	2.11	1.39	.02	1.38		.05	.29	.27	.40	.11	.25
M A L E												
TOTAL - ALL AGES	100.00	36.27	63.73	.28	63.45	.64	8.21	13.90	11.91	13.49	6.89	8.40
TOTAL-10 YEARS & OVER	100.00	19.43	80.57	.29	80.28	.10	6.99	18.64	15.97	18.08	9.24	11.26
TOTAL- 5 YEARS & OVER	100.00	27.16	72.84	.32	72.52	.73	9.39	15.89	13.62	15.41	7.88	9.60
05-09	14.73	10.60	4.14	.07	4.07	.64	3.42					
10-14	13.70	1.68	12.02		12.02		4.60	6.51	.90			
15-19	12.91	1.85	11.07	.02	11.05	.01	.39	2.24	4.37	3.18	.86	
20-24	11.03	1.41	9.62	.03	9.60		.20	1.33	1.68	2.61	2.36	1.41
25-29	8.59	1.37	7.22	.02	7.19	.03	.06	1.07	1.62	1.74	1.07	1.60
30-34	7.13	1.23	5.90	.04	5.86	.02	.27	.78	.96	1.61	.88	1.34
35-39	6.96	1.34	5.61	.01	5.60	.01	.05	.72	1.19	1.79	.66	1.19
40-44	5.80	1.51	4.29	.03	4.26		.08	.87	.63	.98	.57	1.13
45-49	5.04	1.41	3.63	.02	3.62	.01	.11	.71	.55	.97	.37	.89
50-54	3.89	1.19	2.70	.02	2.68		.03	.44	.63	.65	.38	.55
55-59	3.63	1.11	2.52	.03	2.49		.03	.44	.40	.68	.29	.65
60-64	2.68	.79	1.90		1.90		.04	.38	.32	.50	.23	.43
65 YEARS AND OVER	3.90	1.68	2.22	.03	2.19		.09	.41	.35	.70	.22	.42
F E M A L E												
TOTAL - ALL AGES	100.00	46.65	53.35	.31	53.03	.51	7.25	11.95	9.73	11.90	5.66	6.04
TOTAL-10 YEARS & OVER	100.00	33.91	66.09	.37	65.72	.05	5.75	15.82	12.88	15.74	7.49	8.00
TOTAL- 5 YEARS & OVER	100.00	39.68	60.32	.35	59.96	.57	8.20	13.51	11.00	13.45	6.40	6.83
05-09	14.57	10.71	3.86	.04	3.82	.53	3.29					
10-14	13.83	2.56	11.27	.01	11.25		4.13	5.80	1.32			
15-19	12.77	2.07	10.70	.01	10.69		.11	1.71	4.08	3.87	.93	
20-24	12.11	2.60	9.50	.02	9.49		.21	.95	1.17	2.60	2.49	2.07
25-29	9.30	2.76	6.54	.02	6.52	.02	.09	1.09	.92	1.62	.92	1.86
30-34	8.44	2.91	5.53	.04	5.49	.02	.13	1.17	.79	1.66	.69	1.04
35-39	6.68	2.61	4.07	.06	4.01		.06	.88	.82	1.17	.36	.73
40-44	5.56	2.65	2.91	.01	2.90		.08	.70	.42	.88	.37	.46
45-49	4.67	2.77	1.89	.04	1.85		.04	.42	.41	.47	.27	.24
50-54	3.91	2.02	1.89	.06	1.83		.05	.36	.47	.54	.19	.21
55-59	2.96	1.94	1.02		1.02		.01	.21	.25	.30	.15	.10
60-64	2.12	1.52	.60	.03	.57			.08	.15	.26	.05	.03
65 YEARS AND OVER	3.08	2.55	.53		.53			.16	.19	.10		.07

PERCENTAGE DISTRIBUTION OF POPULATION 10 YEARS OF AGE AND OVER BY AGE, SEX, AND MARITAL STATUS 2010-11					
TABLE-3	PAKISTAN	QUARTER: APR-JUN			
AGE GROUPS (YEARS)		MARITAL STATUS			
	TOTAL	NEVER MARRIED	MARRIED	WIDOW / WIDOWER	DIVORCED
1	2	3	4	5	6
BOTH SEXES					
TOTAL (ALL AGES)	100.00	60.48	36.41	2.94	.17
TOTAL (10 YEARS AND OVER)	100.00	44.83	50.83	4.10	.24
10-14	100.00	99.99	.01		
15-19	100.00	93.93	6.03	.02	.02
20-24	100.00	64.23	35.54	.12	.11
25-29	100.00	27.27	72.23	.33	.17
30-34	100.00	8.16	90.75	.75	.34
35-39	100.00	2.85	95.39	1.25	.51
40-44	100.00	1.80	94.35	3.31	.53
45-49	100.00	.94	93.15	5.38	.53
50-54	100.00	.77	90.41	8.27	.55
55-59	100.00	.84	83.46	15.54	.16
60-64	100.00	.68	76.39	21.99	.93
65 YEARS AND OVER	100.00	.33	58.05	41.22	.40
M A L E					
TOTAL (ALL AGES)	100.00	63.99	34.21	1.65	.15
TOTAL (10 YEARS AND OVER)	100.00	49.24	48.22	2.33	.21
10-14	100.00	99.99	.01		
15-19	100.00	97.80	2.17	.03	
20-24	100.00	79.30	20.50	.12	.08
25-29	100.00	39.45	60.16	.26	.14
30-34	100.00	13.47	85.61	.53	.39
35-39	100.00	3.56	95.97	.31	.16
40-44	100.00	1.85	96.51	1.02	.62
45-49	100.00	1.20	96.07	2.11	.62
50-54	100.00	1.03	95.07	3.71	.19
55-59	100.00	.84	92.91	6.17	.08
60-64	100.00	.49	87.62	11.16	.73
65 YEARS AND OVER	100.00	.33	72.47	26.48	.72
F E M A L E					
TOTAL (ALL AGES)	100.00	56.81	38.71	4.28	.20
TOTAL (10 YEARS AND OVER)	100.00	40.30	53.51	5.91	.27
10-14	100.00	100.00			
15-19	100.00	89.82	10.14		.04
20-24	100.00	49.81	49.93	.12	.13
25-29	100.00	16.81	82.60	.40	.19
30-34	100.00	3.72	95.04	.94	.29
35-39	100.00	2.15	94.82	2.18	.85
40-44	100.00	1.76	92.13	5.67	.44
45-49	100.00	.66	90.09	8.82	.44
50-54	100.00	.48	85.24	13.33	.96
55-59	100.00	.84	72.50	26.41	.26
60-64	100.00	.93	62.27	35.63	1.18
65 YEARS AND OVER	100.00	.34	40.09	59.57	

TABLE-3 (A) PAKISTAN RURAL QUARTER: APR-JUN

AGE GROUPS (YEARS)	MARITAL STATUS				
	TOTAL	NEVER MARRIED	MARRIED	WIDOW / WIDOWER	DIVORCED
1	2	3	4	5	6
BOTH SEXES					
TOTAL (ALL AGES)	100.00	60.91	36.04	2.86	.19
TOTAL (10 YEARS AND OVER)	100.00	44.10	51.54	4.09	.27
10-14	100.00	99.99	.01		
15-19	100.00	92.31	7.66	.02	
20-24	100.00	57.77	41.98	.16	.09
25-29	100.00	22.29	77.23	.34	.14
30-34	100.00	6.66	92.12	.87	.35
35-39	100.00	2.52	95.57	1.24	.68
40-44	100.00	1.27	95.05	3.12	.57
45-49	100.00	.84	93.15	5.41	.59
50-54	100.00	.76	89.87	8.50	.87
55-59	100.00	.42	84.15	15.16	.27
60-64	100.00	.98	75.52	22.65	.85
65 YEARS AND OVER	100.00	.14	59.45	39.85	.56
M A L E					
TOTAL (ALL AGES)	100.00	64.65	33.63	1.58	.15
TOTAL (10 YEARS AND OVER)	100.00	48.85	48.65	2.28	.22
10-14	100.00	99.99	.01		
15-19	100.00	97.10	2.86	.05	
20-24	100.00	73.36	26.40	.19	.05
25-29	100.00	31.61	68.21	.18	
30-34	100.00	10.83	88.15	.72	.31
35-39	100.00	3.31	96.39	.18	.12
40-44	100.00	1.29	96.82	1.24	.66
45-49	100.00	.87	96.88	1.59	.66
50-54	100.00	1.42	95.26	3.03	.29
55-59	100.00	.20	93.69	5.97	.14
60-64	100.00	.77	86.08	12.29	.86
65 YEARS AND OVER	100.00	.13	73.39	25.45	1.03
F E M A L E					
TOTAL (ALL AGES)	100.00	57.04	38.54	4.18	.23
TOTAL (10 YEARS AND OVER)	100.00	39.30	54.46	5.91	.33
10-14	100.00	100.00			
15-19	100.00	87.22	12.78		
20-24	100.00	42.87	56.87	.13	.13
25-29	100.00	14.84	84.44	.46	.25
30-34	100.00	3.31	95.32	.98	.39
35-39	100.00	1.78	94.80	2.22	1.20
40-44	100.00	1.25	93.29	4.99	.47
45-49	100.00	.82	89.39	9.28	.52
50-54	100.00		83.67	14.80	1.53
55-59	100.00	.66	73.79	25.15	.40
60-64	100.00	1.23	62.62	35.31	.84
65 YEARS AND OVER	100.00	.16	42.60	57.24	

TABLE-3 (B) PAKISTAN URBAN

QUARTER: APR-JUN

AGE GROUPS (YEARS)	MARITAL STATUS				
	TOTAL	NEVER MARRIED	MARRIED	WIDOW / WIDOWER	DIVORCED
1	2	3	4	5	6
BOTH SEXES					
TOTAL (ALL AGES)	100.00	59.61	37.16	3.10	.13
TOTAL (10 YEARS AND OVER)	100.00	46.19	49.51	4.13	.18
10-14	100.00	99.99	.01		
15-19	100.00	97.14	2.81		.05
20-24	100.00	74.54	25.27	.06	.13
25-29	100.00	35.63	63.83	.33	.21
30-34	100.00	10.65	88.47	.57	.31
35-39	100.00	3.45	95.08	1.27	.20
40-44	100.00	2.82	93.04	3.68	.46
45-49	100.00	1.12	93.15	5.31	.41
50-54	100.00	.78	91.35	7.86	
55-59	100.00	1.51	82.32	16.17	
60-64	100.00	.15	78.00	20.78	1.08
65 YEARS AND OVER	100.00	.74	55.09	44.11	.06
M A L E					
TOTAL (ALL AGES)	100.00	62.67	35.37	1.81	.15
TOTAL (10 YEARS AND OVER)	100.00	49.97	47.41	2.42	.20
10-14	100.00	99.98	.02		
15-19	100.00	99.19	.81		
20-24	100.00	88.80	11.08		.12
25-29	100.00	51.32	47.95	.37	.36
30-34	100.00	17.65	81.60	.23	.52
35-39	100.00	3.99	95.26	.51	.23
40-44	100.00	2.86	95.96	.63	.55
45-49	100.00	1.83	94.56	3.08	.53
50-54	100.00	.32	94.72	4.96	
55-59	100.00	1.79	91.74	6.47	
60-64	100.00		90.34	9.16	.50
65 YEARS AND OVER	100.00	.73	70.60	28.57	.10
F E M A L E					
TOTAL (ALL AGES)	100.00	56.35	39.07	4.47	.11
TOTAL (10 YEARS AND OVER)	100.00	42.23	51.71	5.91	.15
10-14	100.00	100.00			
15-19	100.00	94.96	4.93		.11
20-24	100.00	60.90	38.85	.11	.14
25-29	100.00	20.42	79.23	.29	.07
30-34	100.00	4.45	94.57	.87	.12
35-39	100.00	2.86	94.87	2.10	.16
40-44	100.00	2.78	89.84	7.02	.36
45-49	100.00	.32	91.56	7.84	.28
50-54	100.00	1.27	87.84	10.89	
55-59	100.00	1.15	70.20	28.65	
60-64	100.00	.35	61.58	36.23	1.84
65 YEARS AND OVER	100.00	.75	34.48	64.77	

PERCENTAGE DISTRIBUTION OF TOTAL POPULATION AND THAT OF 10 YEARS AGE AND OVER  
BY AGE, SEX, AREA AND NATURE OF ACTIVITIES 2010-11

TABLE-4

PAKISTAN

QUARTER: APR-JUN

AGE GROUPS (YEARS)	TOTAL POPULATION			CIVILIAN LABOUR FORCE			OUT OF LABOUR FORCE		
	TOTAL	MALE	FEMALE	TOTAL	MALE	FEMALE	TOTAL	MALE	FEMALE
1	2	3	4	5	6	7	8	9	10
ALL AREAS									
TOTAL (ALL AGES)	100.00	51.08	48.92	32.19	24.85	7.35	67.81	26.23	41.58
TOTAL (10 YEARS AND OVER)	100.00	50.59	49.41	44.94	34.69	10.25	55.06	15.90	39.16
10-14	18.53	9.75	8.78	2.06	1.34	.73	16.47	8.42	8.05
15-19	15.56	8.02	7.54	5.36	3.97	1.40	10.20	4.05	6.14
20-24	12.21	5.97	6.24	6.48	4.98	1.50	5.73	.99	4.74
25-29	9.74	4.50	5.24	5.60	4.36	1.23	4.14	.14	4.00
30-34	8.44	3.84	4.60	4.91	3.79	1.12	3.53	.05	3.48
35-39	7.83	3.89	3.94	4.97	3.85	1.12	2.86	.04	2.81
40-44	6.69	3.39	3.30	4.30	3.34	.96	2.39	.05	2.34
45-49	5.91	3.03	2.88	3.78	2.94	.84	2.13	.08	2.04
50-54	4.35	2.29	2.06	2.75	2.19	.55	1.61	.10	1.51
55-59	3.53	1.90	1.64	2.18	1.73	.44	1.36	.17	1.19
60-64	2.78	1.55	1.23	1.37	1.18	.19	1.41	.36	1.04
65 YEARS AND OVER	4.44	2.46	1.98	1.19	1.01	.17	3.25	1.45	1.80
RURAL									
TOTAL (ALL AGES)	100.00	50.88	49.12	33.40	24.43	8.97	66.60	26.45	40.16
TOTAL (10 YEARS AND OVER)	100.00	50.28	49.72	47.76	34.94	12.82	52.24	15.35	36.89
10-14	19.82	10.57	9.25	2.75	1.76	1.00	17.07	8.81	8.25
15-19	15.83	8.16	7.66	6.32	4.49	1.83	9.51	3.67	5.84
20-24	11.50	5.62	5.88	6.64	4.95	1.69	4.86	.67	4.18
25-29	9.35	4.15	5.20	5.50	4.04	1.46	3.85	.11	3.74
30-34	8.08	3.61	4.47	4.90	3.56	1.34	3.18	.04	3.13
35-39	7.74	3.74	4.00	5.14	3.70	1.44	2.60	.04	2.56
40-44	6.70	3.35	3.36	4.53	3.30	1.23	2.18	.05	2.13
45-49	6.02	3.03	3.00	4.06	2.95	1.11	1.96	.08	1.89
50-54	4.24	2.27	1.97	2.88	2.19	.69	1.35	.08	1.28
55-59	3.35	1.75	1.61	2.21	1.63	.58	1.14	.12	1.02
60-64	2.75	1.51	1.24	1.51	1.27	.24	1.24	.24	1.00
65 YEARS AND OVER	4.62	2.53	2.09	1.32	1.10	.21	3.30	1.42	1.88
URBAN									
TOTAL (ALL AGES)	100.00	51.48	48.52	29.76	25.68	4.07	70.24	25.80	44.45
TOTAL (10 YEARS AND OVER)	100.00	51.16	48.84	39.64	34.21	5.43	60.36	16.95	43.41
10-14	16.12	8.22	7.90	.77	.55	.22	15.35	7.67	7.68
15-19	15.05	7.75	7.30	3.57	2.98	.59	11.48	4.76	6.72
20-24	13.54	6.62	6.92	6.18	5.04	1.14	7.36	1.58	5.78
25-29	10.47	5.15	5.32	5.77	4.96	.82	4.70	.20	4.50
30-34	9.10	4.28	4.82	4.91	4.20	.70	4.20	.08	4.12
35-39	8.00	4.17	3.82	4.65	4.12	.53	3.34	.05	3.29
40-44	6.66	3.48	3.18	3.88	3.43	.45	2.78	.05	2.73
45-49	5.69	3.02	2.67	3.26	2.93	.33	2.43	.09	2.34
50-54	4.57	2.33	2.24	2.49	2.20	.29	2.08	.13	1.95
55-59	3.87	2.18	1.69	2.11	1.93	.18	1.77	.25	1.51
60-64	2.82	1.61	1.21	1.10	1.02	.08	1.72	.59	1.13
65 YEARS AND OVER	4.10	2.34	1.76	.94	.85	.10	3.16	1.49	1.67

PERCENTAGE DISTRIBUTION OF CIVILIAN LABOUR FORCE 10 YEARS OF AGE AND OVER  
BY AGE, SEX, AREA AND NATURE OF ACTIVITIES 2010-11

TABLE-5 PAKISTAN QUARTER: APR-JUN

AGE GROUPS (YEARS)	CIVILIAN LABOUR FORCE								
	TOTAL LABOUR FORCE			EMPLOYED			UN-EMPLOYED		
	TOTAL	MALE	FEMALE	TOTAL	MALE	FEMALE	TOTAL	MALE	FEMALE
1	2	3	4	5	6	7	8	9	10
ALL AREAS									
TOTAL (10 YEARS AND OVER)	100.00	77.18	22.82	94.27	73.35	20.91	5.73	3.83	1.90
10-14	4.59	2.97	1.62	4.10	2.60	1.50	.50	.38	.12
15-19	11.93	8.82	3.11	10.70	7.92	2.78	1.23	.90	.33
20-24	14.42	11.08	3.34	12.86	10.05	2.81	1.55	1.03	.53
25-29	12.45	9.70	2.75	11.80	9.31	2.49	.65	.39	.26
30-34	10.92	8.42	2.49	10.70	8.31	2.39	.21	.12	.10
35-39	11.06	8.56	2.50	10.95	8.48	2.46	.11	.08	.03
40-44	9.58	7.44	2.14	9.46	7.37	2.09	.12	.07	.05
45-49	8.42	6.55	1.86	8.25	6.43	1.82	.16	.12	.04
50-54	6.11	4.88	1.23	5.90	4.75	1.15	.21	.13	.08
55-59	4.84	3.85	.99	4.63	3.73	.90	.21	.12	.08
60-64	3.04	2.63	.41	2.71	2.44	.27	.34	.19	.14
65 YEARS AND OVER	2.64	2.26	.39	2.21	1.96	.25	.44	.30	.14
RURAL									
TOTAL (10 YEARS AND OVER)	100.00	73.15	26.85	95.12	69.93	25.19	4.88	3.23	1.66
10-14	5.76	3.68	2.09	5.22	3.29	1.93	.55	.39	.16
15-19	13.22	9.40	3.83	12.10	8.59	3.51	1.12	.81	.32
20-24	13.90	10.36	3.55	12.71	9.54	3.16	1.20	.82	.38
25-29	11.52	8.47	3.05	11.07	8.22	2.86	.45	.25	.20
30-34	10.27	7.46	2.81	10.09	7.35	2.74	.18	.11	.07
35-39	10.76	7.75	3.01	10.66	7.67	2.99	.10	.08	.02
40-44	9.48	6.90	2.58	9.43	6.88	2.55	.05	.03	.03
45-49	8.50	6.18	2.32	8.39	6.10	2.29	.11	.07	.03
50-54	6.04	4.59	1.45	5.87	4.48	1.39	.17	.11	.07
55-59	4.63	3.41	1.22	4.45	3.30	1.15	.18	.11	.08
60-64	3.16	2.66	.50	2.88	2.52	.35	.28	.13	.15
65 YEARS AND OVER	2.76	2.31	.45	2.27	1.99	.28	.49	.32	.17
URBAN									
TOTAL (10 YEARS AND OVER)	100.00	86.31	13.69	92.34	81.11	11.23	7.66	5.20	2.46
10-14	1.94	1.38	.56	1.56	1.03	.53	.38	.35	.03
15-19	9.01	7.53	1.48	7.54	6.41	1.13	1.47	1.12	.35
20-24	15.59	12.71	2.88	13.22	11.21	2.02	2.37	1.50	.86
25-29	14.57	12.51	2.06	13.44	11.79	1.65	1.12	.71	.41
30-34	12.38	10.60	1.78	12.10	10.48	1.62	.28	.12	.16
35-39	11.74	10.40	1.34	11.59	10.32	1.27	.15	.08	.06
40-44	9.80	8.66	1.14	9.54	8.50	1.04	.26	.16	.10
45-49	8.22	7.40	.83	7.93	7.17	.76	.29	.23	.06
50-54	6.28	5.55	.73	5.98	5.36	.62	.30	.19	.11
55-59	5.32	4.86	.46	5.05	4.70	.35	.27	.16	.11
60-64	2.78	2.57	.21	2.33	2.25	.08	.46	.32	.13
65 YEARS AND OVER	2.38	2.14	.24	2.06	1.89	.17	.32	.24	.07

PERCENTAGE DISTRIBUTION OF TOTAL POPULATION AND THAT OF 10 YEARS AGE AND OVER BY AGE, SEX, AREA  
AND NATURE OF ACTIVITIES 2010-11 (AUGMENTED LABOUR FORCE)

TABLE-6 PAKISTAN		QUARTER: APR-JUN								
AGE GRUOPS (YEARS)		POPULATION			LABOUR FORCE			OUT OF LABOUR FORCE		
		TOTAL	MALE	FEMALE	TOTAL	MALE	FEMALE	TOTAL	MALE	FEMALE
1		2	3	4	5	6	7	8	9	10
ALL AREAS										
TOTAL (ALL AGES)		100.00	51.08	48.92	37.58	24.90	12.68	62.42	26.18	36.24
TOTAL (10 YEARS AND OVER)		100.00	50.59	49.41	52.46	34.76	17.70	47.54	15.83	31.71
10-14		18.53	9.75	8.78	2.56	1.35	1.21	15.98	8.40	7.57
15-19		15.56	8.02	7.54	6.30	3.97	2.33	9.26	4.05	5.21
20-24		12.21	5.97	6.24	7.52	4.99	2.52	4.69	.97	3.71
25-29		9.74	4.50	5.24	6.64	4.37	2.27	3.10	.13	2.97
30-34		8.44	3.84	4.60	5.83	3.79	2.04	2.60	.05	2.55
35-39		7.83	3.89	3.94	5.80	3.86	1.94	2.03	.03	2.00
40-44		6.69	3.39	3.30	4.97	3.35	1.62	1.72	.05	1.68
45-49		5.91	3.03	2.88	4.35	2.95	1.40	1.56	.08	1.48
50-54		4.35	2.29	2.06	3.18	2.20	.98	1.17	.09	1.08
55-59		3.53	1.90	1.64	2.48	1.73	.75	1.05	.17	.89
60-64		2.78	1.55	1.23	1.54	1.18	.36	1.24	.36	.87
65 YEARS AND OVER		4.44	2.46	1.98	1.29	1.01	.28	3.14	1.45	1.70
RURAL										
TOTAL (ALL AGES)		100.00	50.88	49.12	40.79	24.51	16.29	59.21	26.37	32.84
TOTAL (10 YEARS AND OVER)		100.00	50.28	49.72	58.34	35.05	23.29	41.66	15.24	26.43
10-14		19.82	10.57	9.25	3.47	1.78	1.70	16.35	8.79	7.55
15-19		15.83	8.16	7.66	7.64	4.49	3.14	8.19	3.67	4.52
20-24		11.50	5.62	5.88	8.10	4.97	3.13	3.40	.65	2.75
25-29		9.35	4.15	5.20	6.98	4.06	2.92	2.37	.09	2.28
30-34		8.08	3.61	4.47	6.19	3.56	2.62	1.89	.04	1.85
35-39		7.74	3.74	4.00	6.31	3.72	2.60	1.43	.03	1.40
40-44		6.70	3.35	3.36	5.48	3.30	2.18	1.23	.05	1.18
45-49		6.02	3.03	3.00	4.84	2.96	1.89	1.18	.07	1.11
50-54		4.24	2.27	1.97	3.50	2.20	1.29	.74	.06	.68
55-59		3.35	1.75	1.61	2.61	1.63	.98	.74	.12	.62
60-64		2.75	1.51	1.24	1.76	1.27	.49	.99	.24	.75
65 YEARS AND OVER		4.62	2.53	2.09	1.46	1.10	.36	3.15	1.42	1.73
URBAN										
TOTAL (ALL AGES)		100.00	51.48	48.52	31.09	25.69	5.40	68.91	25.79	43.12
TOTAL (10 YEARS AND OVER)		100.00	51.16	48.84	41.42	34.22	7.20	58.58	16.94	41.64
10-14		16.12	8.22	7.90	.84	.55	.29	15.29	7.67	7.61
15-19		15.05	7.75	7.30	3.79	2.99	.79	11.27	4.75	6.51
20-24		13.54	6.62	6.92	6.43	5.04	1.39	7.11	1.58	5.53
25-29		10.47	5.15	5.32	6.02	4.96	1.06	4.46	.20	4.26
30-34		9.10	4.28	4.82	5.16	4.20	.95	3.95	.08	3.87
35-39		8.00	4.17	3.82	4.83	4.12	.71	3.17	.05	3.12
40-44		6.66	3.48	3.18	4.00	3.43	.57	2.66	.05	2.61
45-49		5.69	3.02	2.67	3.42	2.93	.48	2.27	.09	2.18
50-54		4.57	2.33	2.24	2.60	2.20	.40	1.97	.13	1.84
55-59		3.87	2.18	1.69	2.24	1.93	.31	1.64	.25	1.38
60-64		2.82	1.61	1.21	1.12	1.02	.10	1.70	.59	1.11
65 YEARS AND OVER		4.10	2.34	1.76	.98	.85	.13	3.12	1.49	1.63

PERCENTAGE DISTRIBUTION OF CIVILIAN LABOUR FORCE 10 YEARS OF AGE AND OVER BY AGE, SEX, AREA  
AND NATURE OF ACTIVITIES 2010-11 (AUGMENTED LABOUR FORCE)

TABLE-7 PAKISTAN		QUARTER: APR-JUN							
AGE GROUPS (YEARS)	TOTAL LABOUR FORCE			EMPLOYED			UN-EMPLOYED		
	TOTAL	MALE	FEMALE	TOTAL	MALE	FEMALE	TOTAL	MALE	FEMALE
1	2	3	4	5	6	7	8	9	10
ALL AREAS									
TOTAL (10 YEARS AND OVER)	100.00	66.26	33.74	95.09	62.98	32.11	4.91	3.28	1.63
10-14	4.87	2.57	2.30	4.45	2.25	2.20	.42	.32	.10
15-19	12.01	7.57	4.44	10.96	6.80	4.16	1.05	.77	.28
20-24	14.33	9.52	4.81	13.00	8.64	4.36	1.33	.88	.45
25-29	12.66	8.33	4.33	12.10	8.00	4.11	.56	.34	.22
30-34	11.11	7.22	3.90	10.93	7.12	3.81	.18	.10	.08
35-39	11.05	7.36	3.70	10.95	7.29	3.67	.10	.07	.03
40-44	9.47	6.38	3.09	9.37	6.32	3.04	.10	.06	.04
45-49	8.29	5.62	2.67	8.15	5.51	2.63	.14	.10	.04
50-54	6.07	4.20	1.87	5.89	4.08	1.81	.18	.12	.07
55-59	4.73	3.30	1.43	4.55	3.19	1.36	.18	.11	.07
60-64	2.93	2.26	.68	2.64	2.09	.55	.29	.16	.12
65 YEARS AND OVER	2.47	1.93	.53	2.09	1.68	.42	.37	.26	.12
RURAL									
TOTAL (10 YEARS AND OVER)	100.00	60.08	39.92	96.00	57.44	38.56	4.00	2.64	1.36
10-14	5.95	3.04	2.91	5.50	2.72	2.78	.45	.32	.13
15-19	13.09	7.70	5.39	12.17	7.04	5.13	.92	.66	.26
20-24	13.88	8.52	5.36	12.90	7.85	5.05	.98	.67	.31
25-29	11.96	6.96	5.00	11.60	6.76	4.84	.36	.20	.16
30-34	10.61	6.11	4.50	10.46	6.02	4.44	.15	.09	.06
35-39	10.82	6.37	4.45	10.74	6.31	4.43	.08	.07	.02
40-44	9.39	5.66	3.73	9.35	5.64	3.71	.04	.02	.02
45-49	8.30	5.07	3.23	8.21	5.01	3.21	.09	.06	.03
50-54	5.99	3.78	2.21	5.85	3.69	2.16	.14	.09	.05
55-59	4.47	2.79	1.68	4.32	2.70	1.62	.15	.09	.06
60-64	3.02	2.18	.84	2.78	2.07	.72	.23	.11	.12
65 YEARS AND OVER	2.51	1.89	.62	2.11	1.63	.48	.40	.26	.14
URBAN									
TOTAL (10 YEARS AND OVER)	100.00	82.63	17.37	92.67	77.65	15.02	7.33	4.97	2.36
10-14	2.02	1.32	.70	1.66	.98	.67	.36	.33	.03
15-19	9.14	7.23	1.91	7.74	6.16	1.58	1.40	1.07	.33
20-24	15.53	12.17	3.37	13.27	10.73	2.54	2.26	1.44	.82
25-29	14.52	11.97	2.55	13.45	11.29	2.16	1.07	.68	.39
30-34	12.45	10.15	2.30	12.18	10.03	2.15	.27	.12	.15
35-39	11.66	9.96	1.70	11.52	9.88	1.64	.14	.08	.06
40-44	9.66	8.29	1.38	9.42	8.14	1.28	.25	.15	.10
45-49	8.25	7.08	1.17	7.97	6.86	1.11	.28	.22	.06
50-54	6.28	5.31	.97	5.99	5.13	.86	.29	.19	.10
55-59	5.40	4.65	.75	5.15	4.50	.65	.26	.15	.10
60-64	2.71	2.46	.25	2.28	2.15	.12	.44	.31	.13
65 YEARS AND OVER	2.36	2.05	.32	2.06	1.81	.25	.30	.23	.07

PERCENTAGE DISTRIBUTION OF POPULATION 10 YEARS OF AGE AND OVER BY LEVEL OF EDUCATION,  
SEX AND NATURE OF ACTIVITIES, 2010-11

TABLE-8 PAKISTAN QUARTER: APR-JUN

NATURE OF ACTIVITY	LEVEL OF EDUCATION							
	TOTAL	ILLIT- ERATE	LITERATE	NO FOR- MAL EDU- CATION	PRE- MATRIC	MATRIC	INTER	DEGREE, POST GRADUATE & Ph.D.
1	2	3	4	5	6	7	8	9
BOTH SEXES								
POPULATION	100.00	41.02	58.98	.34	37.51	11.35	5.00	4.79
CIVILIAN LABOUR FORCE	44.94	19.65	25.29	.18	13.66	5.76	2.53	3.16
EMPLOYED	42.36	18.73	23.63	.18	13.00	5.33	2.27	2.85
UNEMPLOYED	2.58	.92	1.66		.66	.43	.26	.31
NOT IN CIVILIAN LABOUR FORCE	55.06	21.36	33.69	.15	23.85	5.59	2.47	1.63
MALE								
POPULATION	50.59	14.71	35.88	.16	22.79	6.89	3.09	2.94
CIVILIAN LABOUR FORCE	34.69	12.36	22.33	.15	12.25	5.22	2.22	2.49
EMPLOYED	32.97	11.82	21.14	.15	11.71	4.91	2.05	2.34
UNEMPLOYED	1.72	.54	1.18		.54	.31	.18	.15
NOT IN CIVILIAN LABOUR FORCE	15.90	2.35	13.55	.01	10.54	1.67	.87	.46
FEMALE								
POPULATION	49.41	26.31	23.10	.18	14.72	4.45	1.91	1.85
CIVILIAN LABOUR FORCE	10.25	7.29	2.96	.04	1.41	.54	.30	.67
EMPLOYED	9.40	6.91	2.49	.04	1.29	.42	.22	.52
UNEMPLOYED	.86	.38	.48		.12	.12	.08	.16
NOT IN CIVILIAN LABOUR FORCE	39.16	19.02	20.14	.14	13.31	3.91	1.61	1.17

## TABLE-8 (A) PAKISTAN RURAL QUARTER: APR-JUN

BOTH SEXES									
POPULATION	100.00	48.73	51.27	.34	37.15	8.37	3.20	2.20	
CIVILIAN LABOUR FORCE	47.76	24.57	23.20	.19	14.62	4.83	1.94	1.61	
EMPLOYED	45.43	23.56	21.87	.19	14.02	4.50	1.69	1.46	
UNEMPLOYED	2.33	1.00	1.33		.60	.33	.24	.16	
NOT IN CIVILIAN LABOUR FORCE	52.24	24.17	28.07	.15	22.53	3.54	1.27	.58	
MALE									
POPULATION	50.28	17.24	33.04	.17	23.57	5.64	2.22	1.44	
CIVILIAN LABOUR FORCE	34.94	14.64	20.30	.15	12.87	4.32	1.68	1.27	
EMPLOYED	33.40	14.08	19.32	.15	12.37	4.08	1.51	1.20	
UNEMPLOYED	1.54	.56	.98		.50	.24	.17	.08	
NOT IN CIVILIAN LABOUR FORCE	15.35	2.60	12.75	.01	10.70	1.33	.54	.17	
FEMALE									
POPULATION	49.72	31.49	18.22	.18	13.58	2.73	.98	.75	
CIVILIAN LABOUR FORCE	12.82	9.92	2.90	.04	1.75	.51	.26	.34	
EMPLOYED	12.03	9.48	2.55	.04	1.65	.42	.18	.26	
UNEMPLOYED	.79	.44	.35		.10	.09	.08	.08	
NOT IN CIVILIAN LABOUR FORCE	36.89	21.57	15.33	.14	11.84	2.22	.73	.41	

## TABLE-8 (B) PAKISTAN URBAN QUARTER: APR-JUN

BOTH SEXES									
POPULATION	100.00	26.50	73.50	.33	38.18	16.94	8.38	9.67	
CIVILIAN LABOUR FORCE	39.64	10.41	29.23	.16	11.86	7.50	3.64	6.07	
EMPLOYED	36.60	9.65	26.95	.16	11.09	6.88	3.35	5.48	
UNEMPLOYED	3.04	.76	2.28	.01	.77	.62	.29	.59	
NOT IN CIVILIAN LABOUR FORCE	60.36	16.09	44.27	.17	26.32	9.44	4.74	3.60	
MALE									
POPULATION	51.16	9.94	41.22	.15	21.33	9.25	4.73	5.76	
CIVILIAN LABOUR FORCE	34.21	8.06	26.15	.13	11.08	6.92	3.24	4.77	
EMPLOYED	32.15	7.57	24.59	.13	10.48	6.46	3.05	4.48	
UNEMPLOYED	2.06	.50	1.56	.01	.61	.46	.20	.29	
NOT IN CIVILIAN LABOUR FORCE	16.95	1.88	15.07	.02	10.25	2.33	1.48	.99	
FEMALE									
POPULATION	48.84	16.56	32.28	.18	16.85	7.69	3.66	3.91	
CIVILIAN LABOUR FORCE	5.43	2.35	3.08	.03	.78	.58	.39	1.30	
EMPLOYED	4.45	2.08	2.37	.03	.61	.42	.31	1.00	
UNEMPLOYED	.98	.26	.71		.16	.16	.09	.30	
NOT IN CIVILIAN LABOUR FORCE	43.41	14.22	29.20	.15	16.07	7.11	3.26	2.61	

TABLE-9

LABOUR FORCE PARTICIPATION RATES AND UN-EMPLOYMENT RATES BY AGE, SEX AND AREA, 2010-11

PAKISTAN

QUARTER: APR-JUN

AGE GROUPS (YEARS)	LABOUR FORCE PARTICIPATION RATES			UN-EMPLOYMENT RATES		
	TOTAL	MALE	FEMALE	TOTAL	MALE	FEMALE
1	2	3	4	5	6	7
ALL AREAS						
TOTAL (ALL AGES)	32.19	48.65	15.01			
TOTAL (10 YEARS AND OVER)	44.94	68.57	20.75	5.73	4.96	8.34
10-14	11.13	13.70	8.29	10.80	12.68	7.36
15-19	34.47	49.46	18.52	10.31	10.22	10.54
20-24	53.09	83.44	24.06	10.78	9.26	15.79
25-29	57.45	96.88	23.57	5.24	4.04	9.49
30-34	58.16	98.61	24.36	1.94	1.37	3.88
35-39	63.48	98.85	28.49	1.03	.95	1.33
40-44	64.33	98.51	29.14	1.21	.88	2.34
45-49	64.01	97.27	29.08	1.96	1.86	2.30
50-54	63.12	95.84	26.80	3.49	2.75	6.42
55-59	61.59	91.30	27.16	4.32	3.23	8.57
60-64	49.26	76.43	15.07	11.04	7.28	35.04
65 YEARS AND OVER	26.76	41.22	8.76	16.54	13.23	35.90
RURAL						
TOTAL (ALL AGES)	33.40	48.02	18.25			
TOTAL (10 YEARS AND OVER)	47.76	69.48	25.79	4.88	4.41	6.18
10-14	13.89	16.62	10.78	9.50	10.61	7.56
15-19	39.90	54.98	23.84	8.51	8.58	8.31
20-24	57.76	88.03	28.81	8.60	7.87	10.72
25-29	58.82	97.33	28.04	3.87	2.95	6.40
30-34	60.70	98.87	29.95	1.76	1.51	2.44
35-39	66.37	98.88	35.92	.92	1.03	.63
40-44	67.52	98.47	36.66	.56	.36	1.08
45-49	67.39	97.41	37.04	1.27	1.20	1.46
50-54	68.08	96.67	35.19	2.88	2.35	4.56
55-59	65.98	93.25	36.35	3.97	3.17	6.19
60-64	54.79	83.83	19.31	8.95	5.01	29.80
65 YEARS AND OVER	28.56	43.69	10.27	17.75	14.00	37.04
URBAN						
TOTAL (ALL AGES)	29.76	49.89	8.40			
TOTAL (10 YEARS AND OVER)	39.64	66.87	11.11	7.66	6.02	17.97
10-14	4.76	6.64	2.81	19.56	25.23	5.64
15-19	23.72	38.51	8.01	16.29	14.86	23.59
20-24	45.63	76.11	16.48	15.18	11.84	29.94
25-29	55.14	96.20	15.34	7.70	5.70	19.85
30-34	53.90	98.19	14.60	2.28	1.14	9.06
35-39	58.22	98.80	13.89	1.27	.81	4.85
40-44	58.31	98.58	14.20	2.62	1.81	8.80
45-49	57.29	97.02	12.28	3.56	3.10	7.67
50-54	54.47	94.31	12.92	4.82	3.51	14.78
55-59	54.44	88.37	10.77	5.01	3.32	22.87
60-64	39.12	63.34	6.92	16.43	12.59	63.20
65 YEARS AND OVER	22.97	36.20	5.40	13.34	11.35	31.07

## SECTION-II

### CONCEPTS AND DEFINITIONS

A brief explanation of the key concepts and definitions follows.

1. **Reference Period** is a week preceding the date of interview
2. **Literate** is a ten plus aged person who declares he could read and write in any language with understanding.
3. **Literacy rate** relates to the number of literate persons expressed as a percentage of the population ten years and above.
4. **Household** constitutes all those persons who usually live together and share their meals. A household may consist of one person or more who may or may not be related to each other.
5. **Migration** means movement of people from one administrative district to another administrative district at any time of their lives. It excludes movement of population within the current district.
6. **Economically Active Population** comprises all persons of either sex who provide labour services for the production of goods and services as defined by the United Nation System of National Accounts, during a specific reference period. According to this definition, the production of goods and services includes:
  - i) all production and processing of primary products whether for the market, barter or, own consumption,
  - ii) the production of all other goods and services for the market,
  - iii) the households which produce such goods and services for the market and own consumption, and
  - iv) own account construction
7. **Currently Active Population** or the labour force comprises all ten plus aged persons who fulfill the requirements for including among employed or unemployed during the reference period.
8. **Crude activity rate** is the currently active population expressed as a percentage of the total population in Pakistan.
9. **Refined activity rate** is the currently active population expressed as a percentage of the ten plus aged population. This rate enables international comparison by factoring in the effect of age composition.

PERCENTAGE DISTRIBUTION OF EMPLOYED PERSONS 10 YEARS OF AGE AND OVER  
BY MAJOR INDUSTRY DIVISION, SEX AND AREA 2010-11

TABLE-11 PAKISTAN QUARTER: APR-JUN

MAJOR INDUSTRY DIVISION	ALL AREAS			RURAL			URBAN		
	TOTAL	MALE	FEMALE	TOTAL	MALE	FEMALE	TOTAL	MALE	FEMALE
1	2	3	4	5	6	7	8	9	10
TOTAL	100.00	77.81	22.19	70.00	51.46	18.54	30.00	26.35	3.65
AGRICULTURE, HUNTING AND FORESTRY	45.30	28.55	16.75	42.70	26.90	15.80	2.60	1.64	.95
FISHING	.07	.07		.02	.02		.06	.06	
MINING AND QUARRYING	.09	.09		.03	.03		.06	.06	
MANUFACTURING	13.12	10.95	2.17	6.18	4.83	1.34	6.94	6.11	.83
ELECTRICITY, GAS AND WATER SUPPLY	.46	.46		.23	.23		.23	.23	
CONSTRUCTION	6.42	6.41	.01	4.63	4.62	.01	1.79	1.79	
WHOLESALE AND RETAIL TRADE,REPAIR OF MOTOR VEHICLES, MOTORCYCLES AND PERSONAL AND HOUSEHOLD GOODS	15.12	14.83	.29	6.51	6.30	.21	8.61	8.53	.08
HOTELS AND RESTAURANTS	1.27	1.22	.05	.61	.61		.66	.61	.05
TRANSPORT, STORAGE AND COMMUNICATION	4.89	4.87	.02	2.75	2.73	.02	2.14	2.14	
FINANCIAL INTERMEDIATION	.51	.50	.01	.13	.13		.38	.37	.01
REAL ESTATE, RENTING AND BUSINESS ACTIVITIES	1.01	1.00	.02	.30	.30		.71	.70	.02
PUBLIC ADMINISTRATION AND DEFENCE COMPULSORY SOCIAL SECURITY	3.16	3.05	.12	1.46	1.44	.01	1.71	1.60	.11
EDUCATION	4.28	2.68	1.59	2.27	1.66	.60	2.01	1.02	.99
HEALTH AND SOCIAL WORK	1.30	.92	.38	.63	.44	.19	.67	.49	.18
OTHER COMMUNITY, SOCIAL AND PERSONAL SERVICE ACTIVITIES	2.95	2.18	.77	1.55	1.21	.34	1.40	.97	.43
ACTIVITIES OF PRIVATE HOUSEHOLDS AS EMPLOYERS AND UNDIFFERENTIATED PRODUCTON	.03	.03		.01	.01		.02	.02	
EXTRATERRITORIAL ORGANIZATIONS AND BODIES	.02	.01	.01				.02	.01	.01

PERCENTAGE DISTRIBUTION OF EMPLOYED PERSONS 10 YEARS OF AGE AND OVER  
BY MAJOR OCCUPATION GROUPS, SEX AND AREA 2010-11

TABLE-12		PAKISTAN					QUARTER: APR-JUN			
MAJOR OCCUPATION GROUPS		TOTAL			RURAL			URBAN		
		TOTAL	MALE	FEMALE	TOTAL	MALE	FEMALE	TOTAL	MALE	FEMALE
1		2	3	4	5	6	7	8	9	10
TOTAL		100.00	77.81	22.19	70.00	51.46	18.54	30.00	26.35	3.65
LEGISLATORS, SENIOR OFFICIALS AND MANAGERS		11.85	11.49	.36	4.96	4.74	.22	6.90	6.75	.15
PROFESSIONALS		1.84	1.53	.31	.73	.64	.09	1.11	.89	.22
TECHNICIANS AND ASSOCIATE PROFESSIONALS		5.95	4.28	1.66	2.85	2.11	.74	3.10	2.17	.92
CLERKS		1.30	1.25	.05	.50	.50		.80	.75	.05
SERVICE WORKERS AND SHOP AND MARKET SALES WORKERS		4.93	4.79	.14	2.33	2.28	.05	2.60	2.50	.10
SKILLED AGRICULTURAL AND FISHERY WORKERS		37.08	23.57	13.51	34.90	22.18	12.72	2.18	1.39	.79
CRAFT AND RELATED TRADES WORKERS		14.33	12.26	2.06	7.48	6.19	1.30	6.84	6.08	.77
PLANT AND MACHINE OPERATORS AND ASSEMBLERS		3.52	3.52		2.03	2.03		1.49	1.49	
ELEMENTARY(UNSKILLED) OCCUPATIONS		19.21	15.13	4.08	14.22	10.80	3.42	4.99	4.33	.66

PERCENTAGE DISTRIBUTION OF EMPLOYED PERSONS 10 YEARS OF AGE AND OVER BY EMPLOYMENT STATUS,  
NUMBER OF HOURS WORKED DURING REFERENCE WEEK AND SEX, 2010-11

TABLE-13 PAKISTAN QUARTER: APR-JUN

EMPLOYMENT STATUS	NUMBER OF EMPLOYED PERSONS BY HOURS WORKED											
	TOTAL	NOT WORKED	LESS THAN 5 HOURS	05-09 HOURS	10-14 HOURS	15-24 HOURS	25-34 HOURS	35-39 HOURS	40-41 HOURS	42-48 HOURS	49-55 HOURS	56 HO-URS & OVER
1	2	3	4	5	6	7	8	9	10	11	12	13
BOTH SEXES	100.00	.22	.22	.41	1.18	5.17	7.18	12.04	5.67	24.00	12.58	31.34
EMPLOYER	1.53	.01	.03			.01	.06	.05	.02	.38	.25	.72
SELF EMPLOYED	35.00	.07	.07	.07	.23	1.21	1.66	2.95	1.47	6.99	5.87	14.38
UNPAID FAMILY HELPERS	27.47	.03	.07	.32	.86	3.47	3.49	6.25	1.31	4.36	2.61	4.70
EMPLOYEES	36.01	.11	.04	.02	.08	.47	1.97	2.79	2.87	12.26	3.85	11.54
MALE	100.00	.26	.20	.22	.37	1.85	3.86	8.17	5.90	26.49	14.63	38.06
EMPLOYER	1.90	.01	.04				.06	.05	.02	.47	.32	.92
SELF EMPLOYED	40.65	.10	.06	.07	.15	.66	1.29	2.88	1.67	8.28	7.36	18.14
UNPAID FAMILY HELPERS	16.93	.03	.04	.13	.18	.83	1.02	3.16	.95	3.32	2.37	4.89
EMPLOYEES	40.52	.11	.05	.01	.04	.36	1.49	2.08	3.26	14.43	4.57	14.11
FEMALE	100.00	.09	.28	1.07	4.03	16.79	18.81	25.65	4.84	15.25	5.41	7.79
EMPLOYER	.23					.05	.05	.06		.07		
SELF EMPLOYED	15.17		.11	.09	.53	3.16	2.95	3.21	.77	2.49	.66	1.20
UNPAID FAMILY HELPERS	64.43		.17	.96	3.27	12.74	12.16	17.08	2.54	8.04	3.42	4.06
EMPLOYEES	20.17	.09		.03	.23	.85	3.66	5.30	1.52	4.65	1.32	2.53

PERCENTAGE DISTRIBUTION OF EMPLOYED PERSONS 10 YEARS OF AGE AND OVER BY EMPLOYMENT STATUS,  
NUMBER OF HOURS WORKED DURING REFERENCE WEEK AND SEX, 2010-11

TABLE-13 (A) PAKISTAN RURAL

QUARTER: APR-JUN

EMPLOYMENT STATUS	NUMBER OF EMPLOYED PERSONS BY HOURS WORKED											
	TOTAL	NOT WORKED	LESS THAN 5 HOURS	05-09 HOURS	10-14 HOURS	15-24 HOURS	25-34 HOURS	35-39 HOURS	40-41 HOURS	42-48 HOURS	49-55 HOURS	56 HOURS & OVER
1	2	3	4	5	6	7	8	9	10	11	12	13
BOTH SEXES	100.00	.22	.26	.55	1.47	6.47	8.27	13.69	6.07	22.49	12.09	28.42
EMPLOYER	.67						.03	.03	.01	.20	.09	.32
SELF EMPLOYED	36.40	.08	.11	.09	.26	1.34	1.89	3.44	1.81	7.65	6.10	13.64
UNPAID FAMILY HELPERS	33.73	.04	.10	.45	1.11	4.65	4.58	8.07	1.74	4.99	3.09	4.91
EMPLOYEES	29.19	.11	.05	.01	.10	.49	1.77	2.14	2.51	9.65	2.81	9.55
MALE	100.00	.27	.23	.31	.45	2.34	4.41	9.69	6.50	25.57	14.44	35.78
EMPLOYER	.88						.04	.03	.01	.25	.12	.44
SELF EMPLOYED	44.38	.11	.10	.09	.20	.75	1.60	3.51	2.14	9.65	8.09	18.14
UNPAID FAMILY HELPERS	20.19	.05	.07	.20	.21	1.20	1.26	4.33	1.30	3.69	2.85	5.04
EMPLOYEES	34.56	.11	.07	.02	.04	.39	1.51	1.83	3.05	11.98	3.38	12.16
FEMALE	100.00	.09	.34	1.21	4.30	17.94	18.99	24.78	4.86	13.92	5.56	8.00
EMPLOYER	.11							.06		.06		
SELF EMPLOYED	14.27		.13	.08	.44	2.97	2.67	3.27	.89	2.10	.55	1.15
UNPAID FAMILY HELPERS	71.32		.21	1.12	3.61	14.22	13.82	18.44	2.98	8.59	3.77	4.56
EMPLOYEES	14.30	.09			.24	.75	2.50	3.01	1.00	3.17	1.24	2.29

PERCENTAGE DISTRIBUTION OF EMPLOYED PERSONS 10 YEARS OF AGE AND OVER BY EMPLOYMENT STATUS,  
NUMBER OF HOURS WORKED DURING REFERENCE WEEK AND SEX, 2010-11

TABLE-13 (B) PAKISTAN URBAN

QUARTER: APR-JUN

EMPLOYMENT STATUS	NUMBER OF EMPLOYED PERSONS BY HOURS WORKED											
	TOTAL	NOT WORKED	LESS THAN 5 HOURS	05-09 HOURS	10-14 HOURS	15-24 HOURS	25-34 HOURS	35-39 HOURS	40-41 HOURS	42-48 HOURS	49-55 HOURS	56 HOURS & OVER
1	2	3	4	5	6	7	8	9	10	11	12	13
BOTH SEXES	100.00	.20	.11	.08	.50	2.12	4.63	8.21	4.73	27.52	13.73	38.16
EMPLOYER	3.52	.04	.09			.04	.13	.10	.05	.80	.63	1.64
SELF EMPLOYED	31.71	.06		.05	.16	.92	1.13	1.80	.66	5.46	5.36	16.11
UNPAID FAMILY HELPERS	12.86			.01	.29	.73	.95	1.99	.29	2.91	1.47	4.22
EMPLOYEES	51.90	.10	.02	.02	.05	.43	2.43	4.31	3.72	18.36	6.27	16.19
MALE	100.00	.22	.13	.04	.20	.89	2.80	5.19	4.73	28.29	14.99	42.52
EMPLOYER	3.90	.04	.11			.01	.11	.11	.06	.89	.71	1.86
SELF EMPLOYED	33.37	.07		.04	.05	.47	.68	1.65	.74	5.59	5.93	18.15
UNPAID FAMILY HELPERS	10.56				.12	.11	.57	.87	.29	2.59	1.44	4.59
EMPLOYEES	52.17	.11	.02		.04	.30	1.45	2.56	3.65	19.22	6.91	17.92
FEMALE	100.00	.05		.40	2.64	10.99	17.88	30.03	4.70	21.97	4.63	6.72
EMPLOYER	.82					.30	.28	.07	.01	.13	.03	
SELF EMPLOYED	19.73			.11	.99	4.12	4.34	2.92	.14	4.46	1.23	1.42
UNPAID FAMILY HELPERS	29.46			.12	1.51	5.20	3.70	10.14	.35	5.25	1.67	1.53
EMPLOYEES	49.99	.05		.17	.14	1.38	9.55	16.90	4.19	12.14	1.71	3.77

PERCENTAGE DISTRIBUTION OF EMPLOYED PERSONS 10 YEARS OF AGE AND OVER BY MAJOR SECTORS  
OF EMPLOYMENT, SEX, AREA PROVINCE AND PAKISTAN 2010-11

TABLE-14

QUARTER: APR-JUN

MAJOR SECTORS OF EMPLOYMENT	ALL AREAS			RURAL			URBAN		
	TOTAL	MALE	FEMALE	TOTAL	MALE	FEMALE	TOTAL	MALE	FEMALE
	2	3	4	5	6	7	8	9	10
PAKISTAN	100.00	77.81	22.19	70.00	51.46	18.54	30.00	26.35	3.65
AGRICULTURE	45.37	28.62	16.75	42.72	26.92	15.80	2.65	1.70	.95
NON-AGRICULTURE	54.63	49.19	5.43	27.28	24.54	2.74	27.35	24.65	2.70
FORMAL	14.31	12.66	1.65	6.71	6.04	.67	7.60	6.62	.98
INFORMAL	40.32	36.53	3.78	20.57	18.51	2.07	19.75	18.03	1.72
PUNJAB	100.00	73.49	26.51	72.18	49.53	22.66	27.82	23.96	3.86
AGRICULTURE	47.40	26.97	20.42	44.71	25.24	19.47	2.68	1.73	.95
NON-AGRICULTURE	52.60	46.51	6.09	27.47	24.28	3.18	25.14	22.23	2.91
FORMAL	11.85	10.18	1.67	6.24	5.51	.74	5.60	4.67	.93
INFORMAL	40.76	36.34	4.42	21.22	18.78	2.45	19.53	17.56	1.97
SINDH	100.00	84.21	15.79	56.60	45.26	11.34	43.40	38.94	4.45
AGRICULTURE	42.74	30.50	12.24	39.16	28.33	10.83	3.57	2.17	1.41
NON-AGRICULTURE	57.26	53.71	3.55	17.44	16.93	.51	39.82	36.78	3.04
FORMAL	20.68	19.22	1.45	6.23	6.09	.14	14.45	13.14	1.31
INFORMAL	36.58	34.48	2.10	11.21	10.84	.37	25.37	23.64	1.73
KHYBER Pk	100.00	81.78	18.22	83.32	66.80	16.52	16.68	14.98	1.70
AGRICULTURE	36.61	25.78	10.83	36.15	25.42	10.72	.47	.36	.11
NON-AGRICULTURE	63.39	55.99	7.39	47.17	41.37	5.80	16.22	14.62	1.59
FORMAL	13.75	11.35	2.40	9.56	7.91	1.65	4.19	3.44	.75
INFORMAL	49.64	44.64	5.00	37.61	33.46	4.15	12.03	11.18	.84
BALUCHISTAN	100.00	91.68	8.32	80.45	73.47	6.98	19.55	18.21	1.34
AGRICULTURE	56.72	49.85	6.88	53.78	47.55	6.23	2.95	2.30	.65
NON-AGRICULTURE	43.28	41.83	1.45	26.68	25.92	.76	16.60	15.91	.69
FORMAL	13.71	13.36	.35	8.22	8.15	.07	5.49	5.21	.28
INFORMAL	29.57	28.47	1.10	18.46	17.77	.69	11.11	10.70	.41

TABLE-17

QUARTER: APR-JUN

PROVINCE	MEANS HOURS WORKED DURING REFERENCE WEEK								
	ALL AREAS			RURAL			URBAN		
	TOTAL	MALE	FEMALE	TOTAL	MALE	FEMALE	TOTAL	MALE	FEMALE
	2	3	4	5	6	7	8	9	10
PAKISTAN	48.09	51.76	35.27	46.55	50.76	34.89	51.70	53.71	37.22
PUNJAB	48.65	53.18	36.17	47.55	52.90	35.88	51.53	53.74	37.82
SINDH	48.72	51.36	34.64	45.87	48.83	34.06	52.44	54.31	36.11
KHYBER Pk	44.49	47.83	29.47	43.46	47.04	28.94	49.65	51.35	34.62
BALUCHISTAN	46.41	47.28	36.94	45.44	46.37	35.67	50.41	50.91	43.53